



Thailand's Climate Change Adaptation Progress

Kollawat Sakhakara, Ph.D.

Climate Change Coordination and Management Division
Office of Natural Resources and Environmental Policy and Planning
Ministry of Natural Resources and Environment



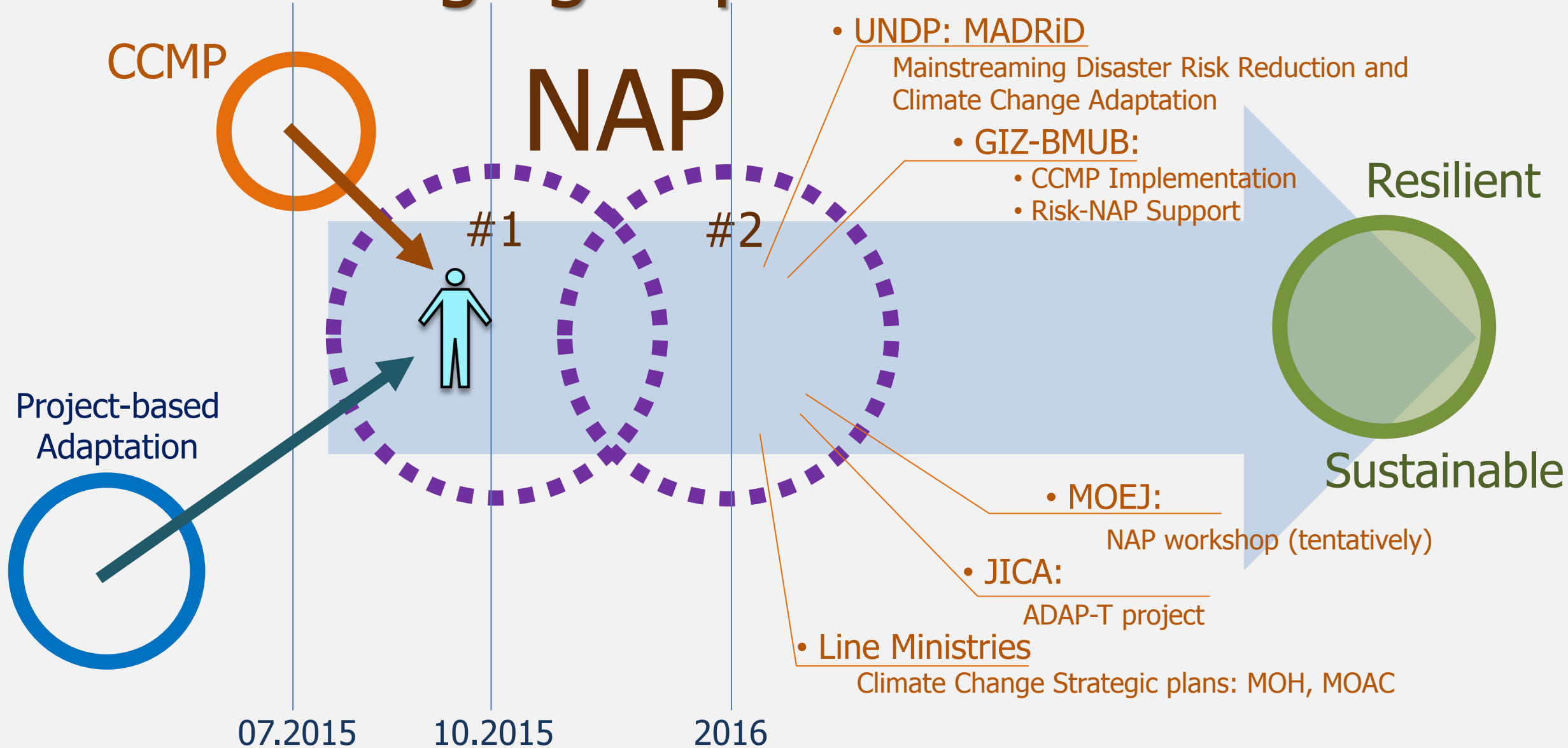
No Legal Binding / Framework

Cabinet approved Climate Change Master Plan (CCMP) 2015-2050

- Adaptation is 1 of the 3 principal issues under CCMP
- Adaptation's 6 concerned sectors
 - Water management, Flood and Drought
 - Agriculture and Food Security
 - Human Health
 - Tourism
 - Natural Resources
 - Human Settlement and Security
- 2-year project of developing NAP (launched in January 2015)
 - 2 phases of NAP development



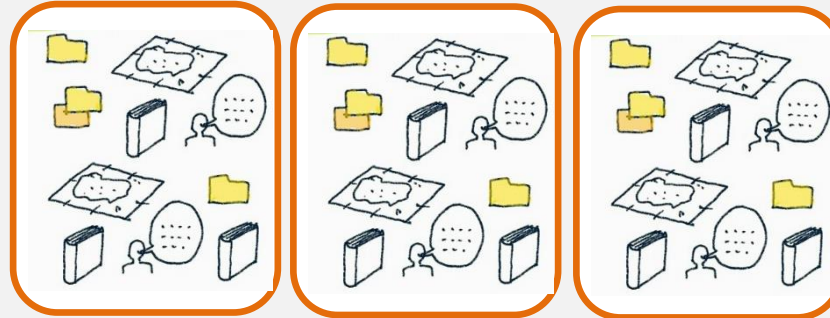
Bridging Gaps and Needs



1st Phase NAP Outcomes *(in progress)*



1. Vulnerability database



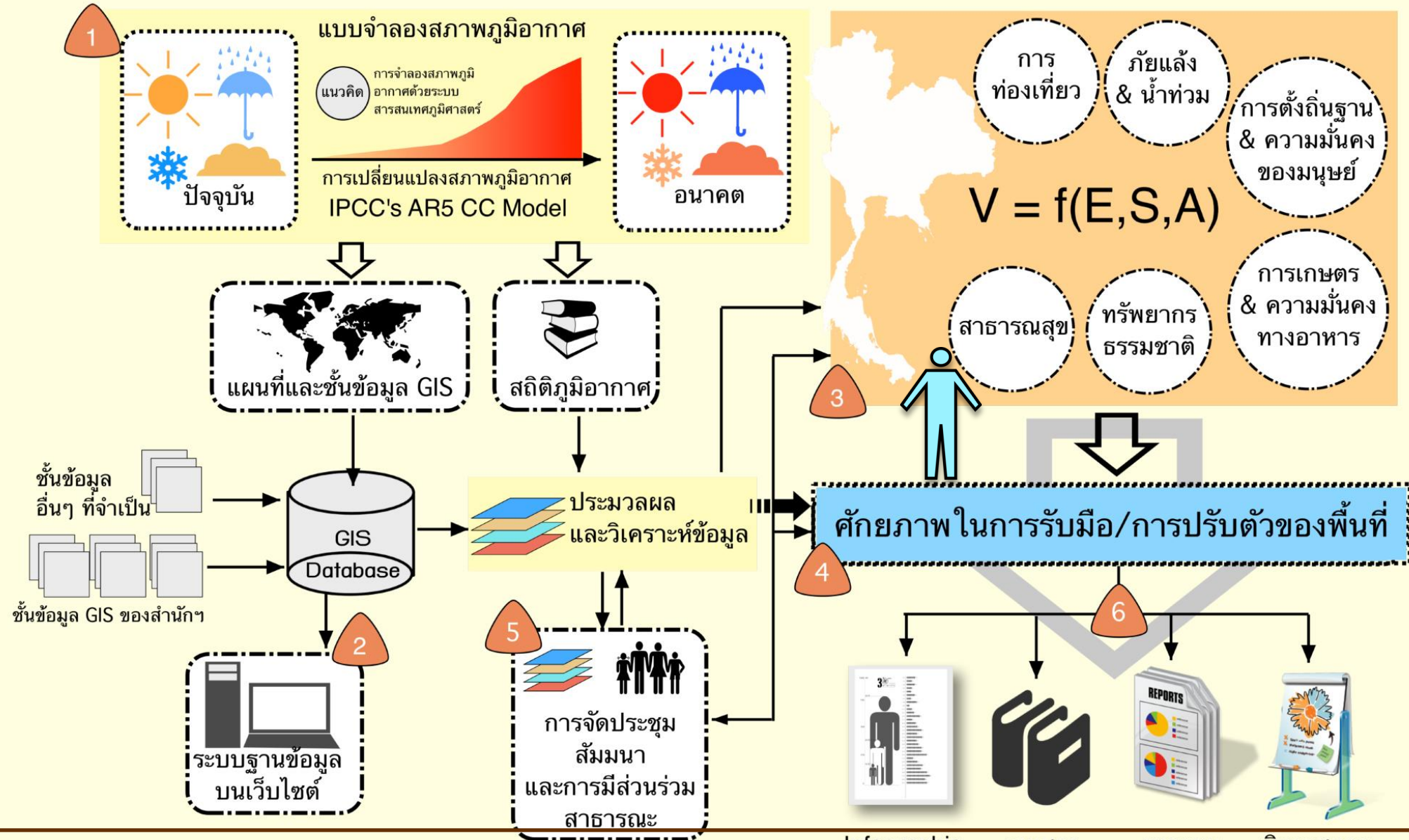
2. Vulnerability Circumstance



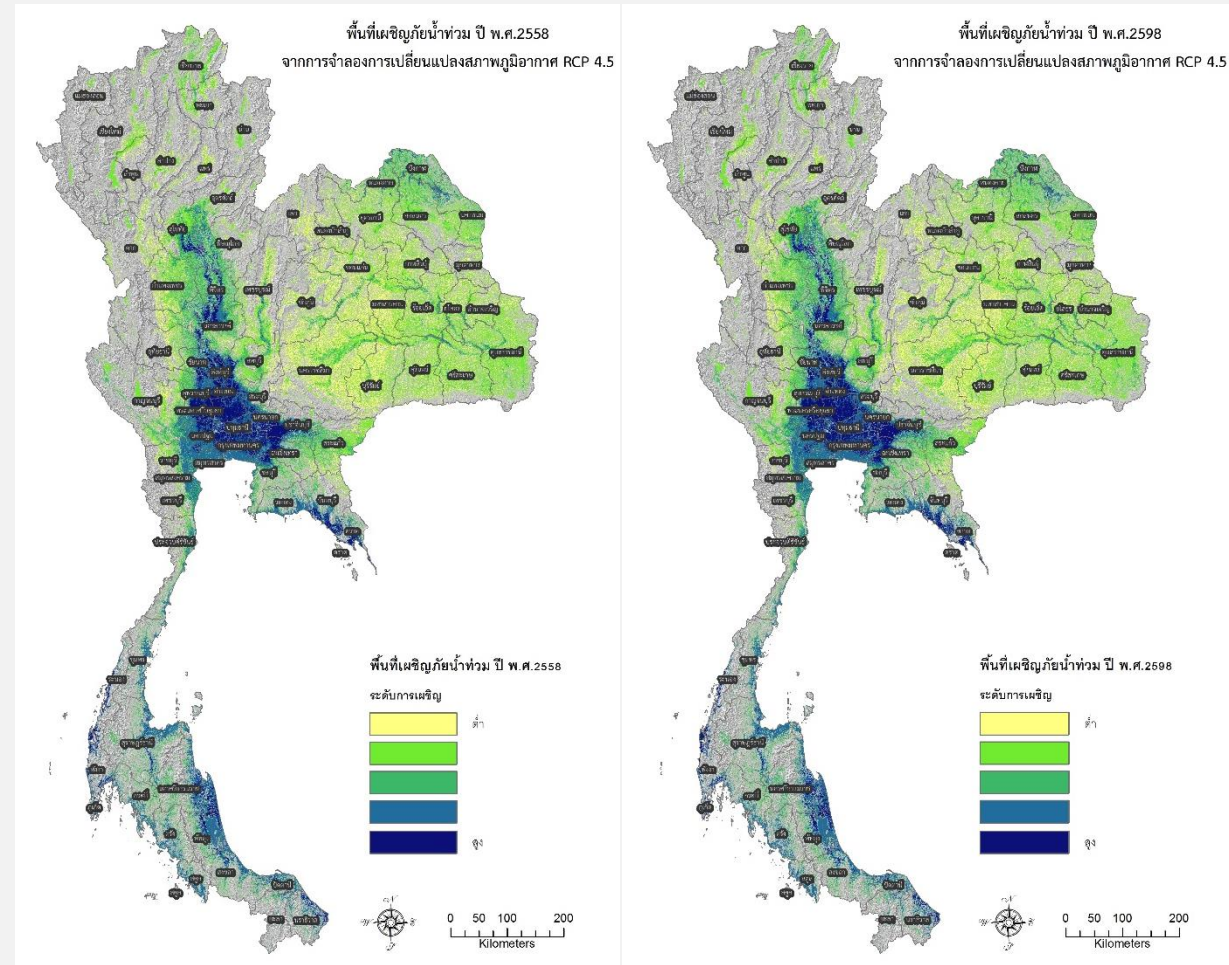
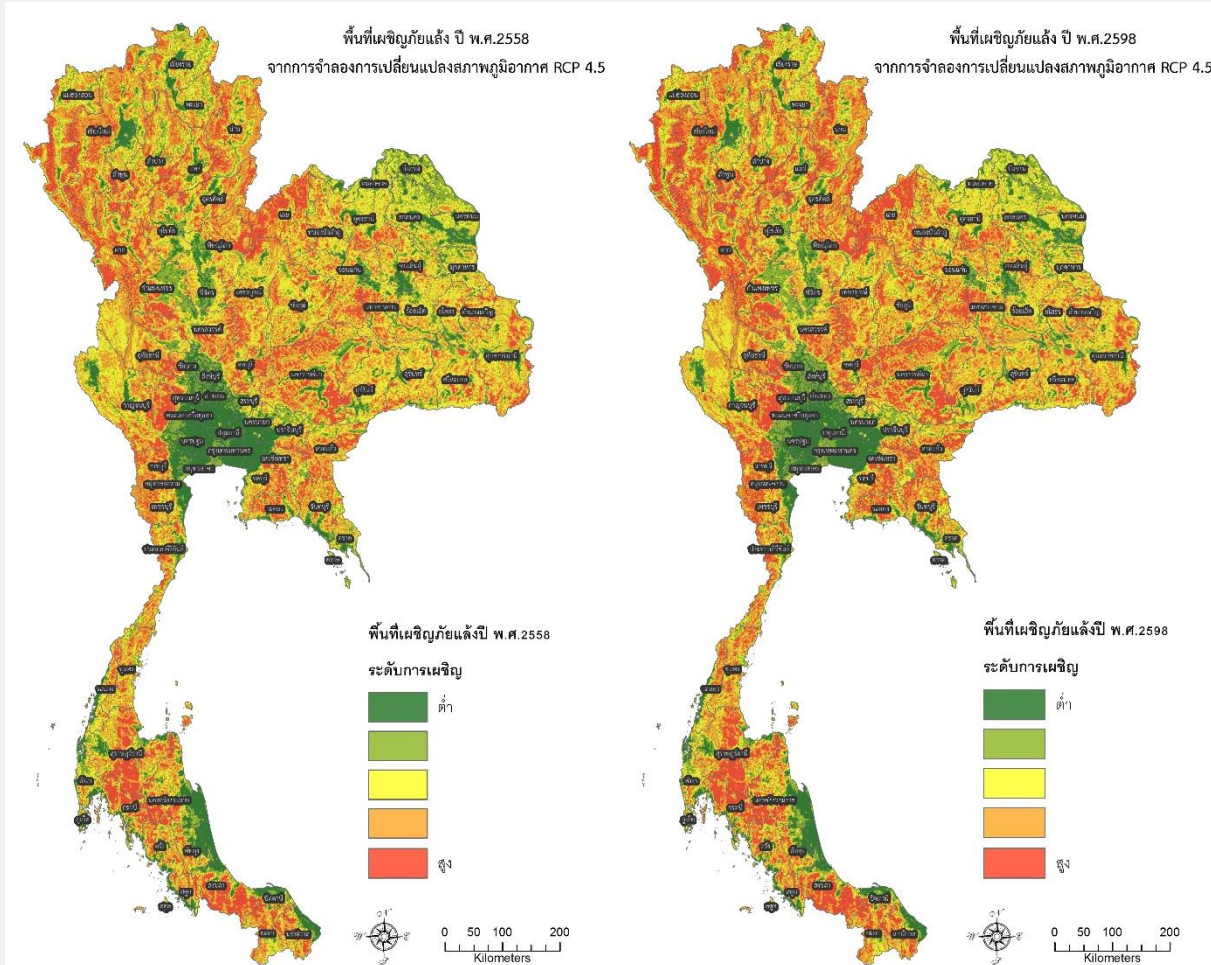
3. Suggestions of drafting NAP

- Gaps and Needs
- Priority List
- Methodologies

1st Phase NAP Outcomes *(in progress)*



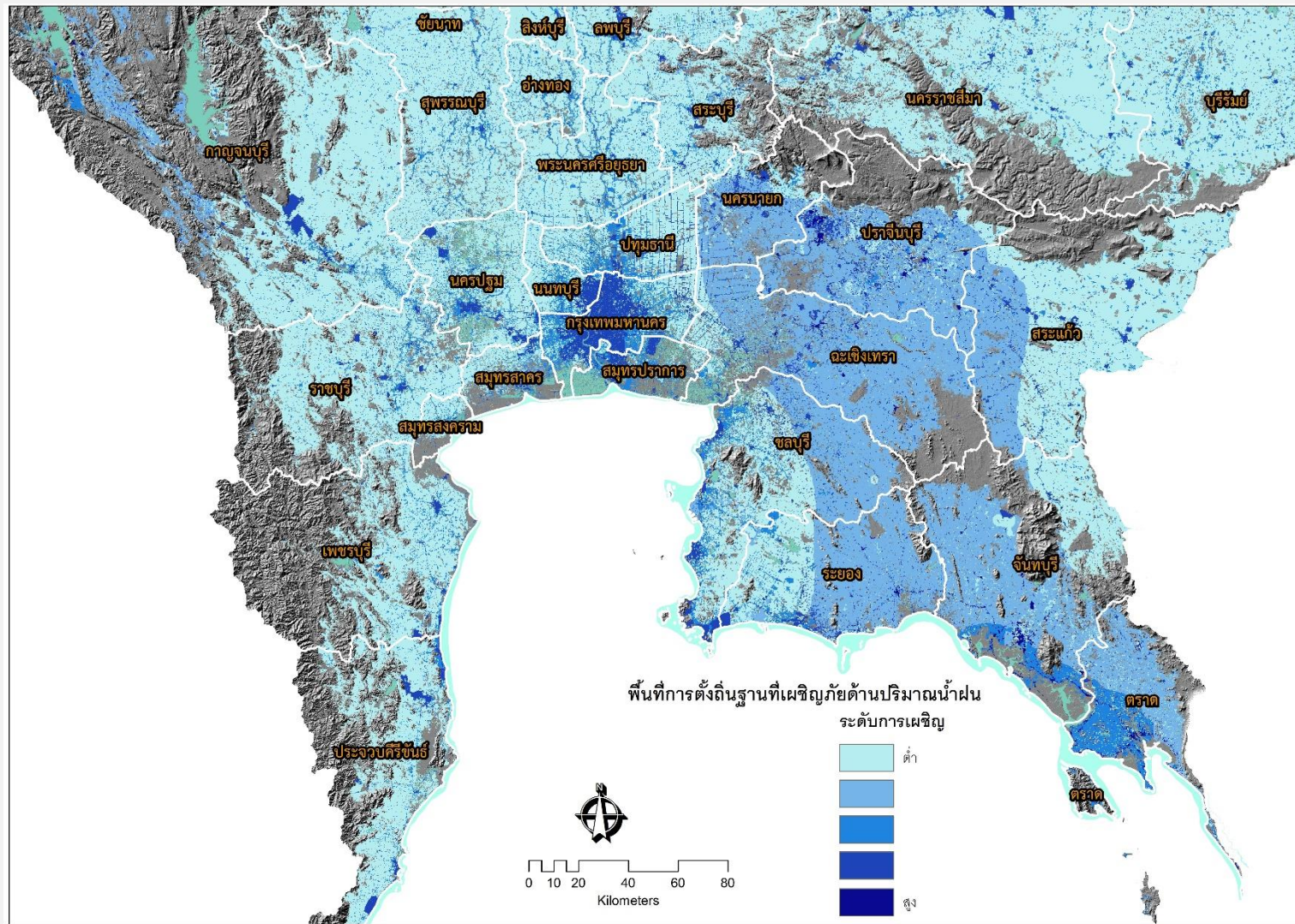
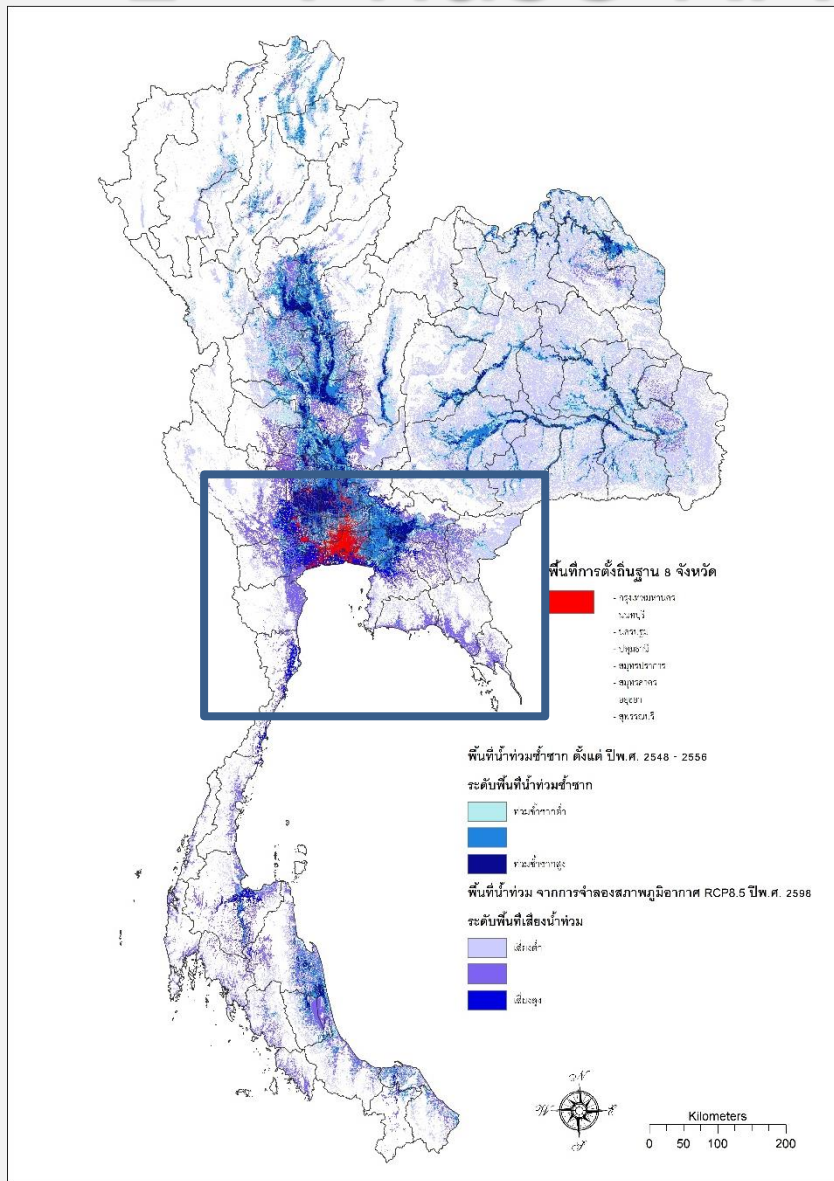
1st Phase NAP Outcomes *(in progress)*



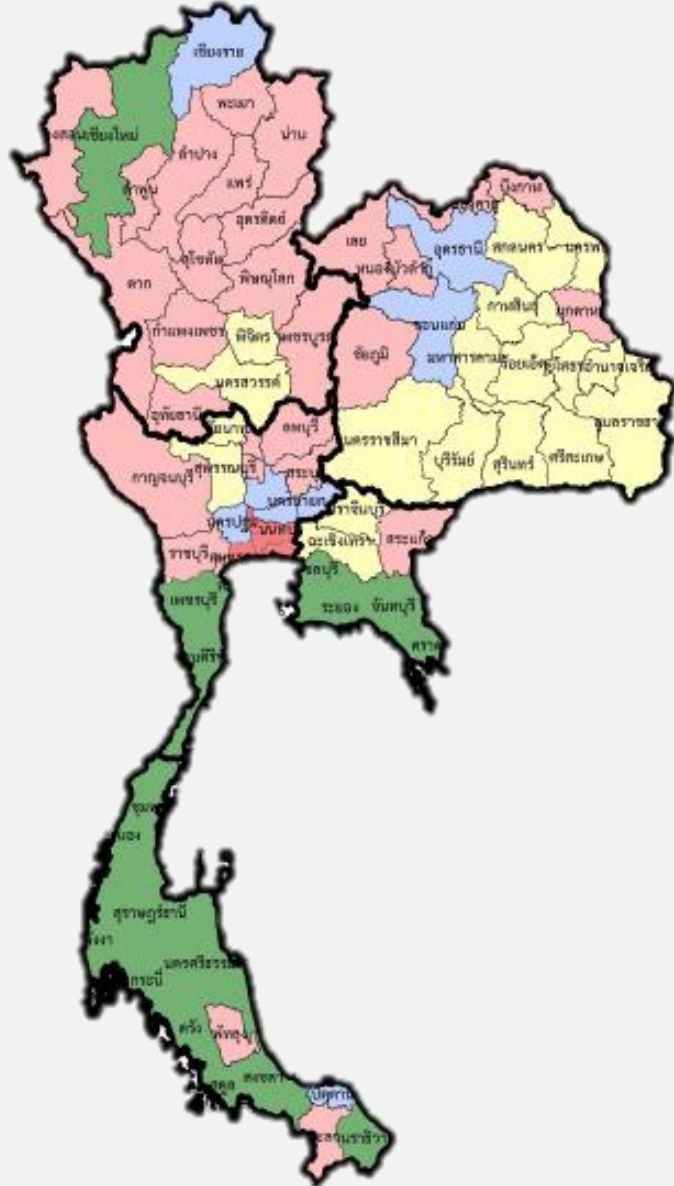
Impact on Drought

Impact on Flood

1st Phase NAP Outcomes (in progress)




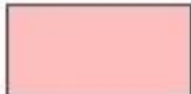



1st Phase NAP Outcomes *(in progress)*

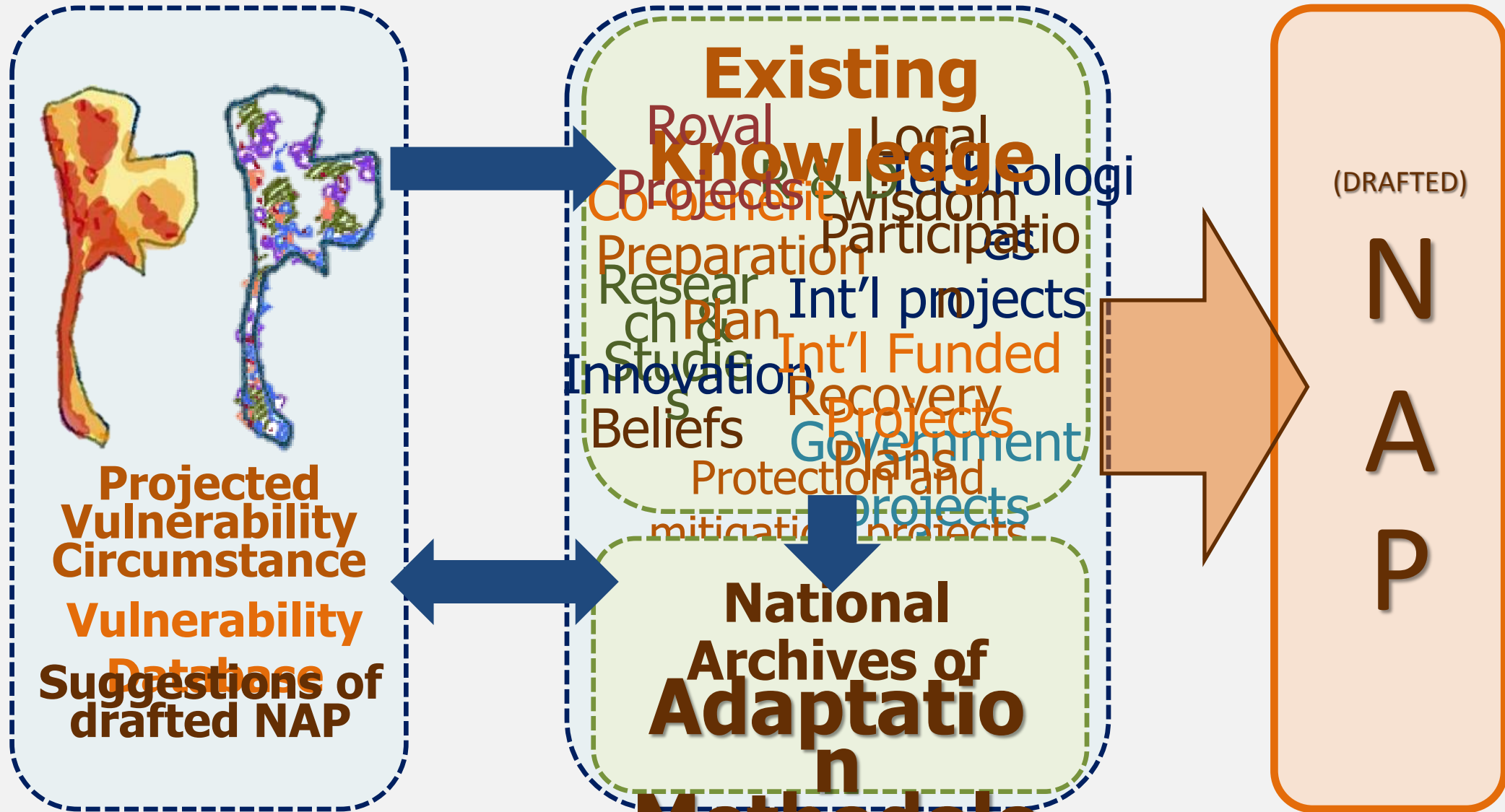


กลุ่มจังหวัด

ความเปราะบางด้าน

-  ดั้งถิ่นฐาน และการท่องเที่ยววัฒนธรรม
-  พื้นที่ชุ่มน้ำ และดั้งถิ่นฐาน
-  พืชอาหาร พืชไร่ สาธารณสุข
-  ป่าไม้ พืชไร่ และสาธารณสุข
-  ป่าชายเลน ป่าไม้ ท่องเที่ยวธรรมชาติ และดั้งถิ่นฐาน

2nd Phase NAP Outcomes (2016)



Methodology



Constraints and Opportunities

- Local research and studies
- Data Accessibility/Availability
- Contribution and Standardization of Databases
- Indigenous Knowledge Database
- Knowledge and Awareness Gaps
- Socio-Economic Co-benefits Linkages
- Inadequate Financial Supports



Thank you

Climate Change Coordination and Management Division
Office of Natural Resources and Environmental Policy and Planning
Ministry of Natural Resources and Environment
Phibulwatana 7 Rama VI Rd., Prayathai District, BKK 10400 Thailand
T/F: 66 2265 6692, 66 2265 6500 ext. 6842 / www.onep.go.th