

# ADAPTATION COMMITTEE

## Navigating the landscape of support for the process to formulate and implement national adaptation plans

2015 Overview for developing countries



© 2015 United Nations Climate Change Secretariat  
all rights reserved.

This publication is issued for public information purposes and is not an official text of the Convention in any legal or technical sense. Unless otherwise noted in captions or graphics all matter may be freely reproduced in part or in full, provided the source is acknowledged.

For further information contact  
United Nations Climate Change Secretariat  
Platz der Vereinten Nationen 1  
53113 Bonn, Germany  
Telephone +49 228 815 10 00  
Telefax +49 228 815 19 99

ISBN 978-92-9219-162-7

Design and layout: Phoenix Design Aid A/S  
Printing: Imprimerie Centrale

Printed on FSC® certified paper.  
The printed matter is recyclable.



## FOREWORD BY THE CO-CHAIRS OF THE ADAPTATION COMMITTEE

In 2010, the Conference of the Parties to the United Nations Framework Convention on Climate Change (UNFCCC) established a process to formulate and implement national adaptation plans (NAPs) to address medium- and long-term adaptation needs. This process offers countries the opportunity to reduce their vulnerabilities and integrate their existing adaptation efforts, which span different sectors and levels and include projects, programmes and strategies, into one comprehensive adaptation planning and implementation process at the national level.

Several developing countries that have embarked on the process to formulate and implement NAPs have identified gaps and needs to effectively conduct the process in their country, in particular support needs. They have communicated a need for adequate adaptation finance, for capacity-building and technical support, for identifying and transferring technologies for adaptation, and for opportunities to share knowledge and information. In an attempt to address those needs, various support windows have been created both under and outside the Convention.

In this publication, the Adaptation Committee seeks to highlight the state of play of available support for the process to formulate and implement NAPs, as of October 2015. The publication focuses on institutions and agencies providing financial, technical and institutional capacity-building and technological support, as well as those offering knowledge hubs and platforms. It also provides points of contact and sources where additional information can be obtained.

We would like to warmly thank all the entities and programmes that have provided valuable input to the realization of this publication, in particular the Least Developed Countries Expert Group, the Technology Executive Committee, the Climate Technology Centre and Network, the Nairobi work programme on impacts, vulnerability and adaptation to climate change, the Green Climate Fund, the Global Environment Facility, the Adaptation Fund, the NAP Global Network, the Organization for Economic Co-operation and Development, as well as the United Nations Development Programme, the United Nations Environment Programme and other partners of the NAP Global Support Programmes.

The Adaptation Committee is hopeful that this publication will assist developing countries in navigating the landscape of existing support for their NAP process.



A handwritten signature in blue ink.

Juan Hoffmaister  
Co-Chair  
of the Adaptation Committee



A handwritten signature in blue ink.

Don Lemmen  
Co-Chair  
of the Adaptation Committee



# CONTENTS

<b>1. INTRODUCTION .....</b>	<b>6</b>
<b>2. SUPPORT AVAILABLE TO DEVELOPING COUNTRIES .....</b>	<b>7</b>
2.1. GUIDANCE AND RESOURCES.....	8
2.2. FINANCIAL SUPPORT.....	10
2.3. SUPPORT TO BUILD AND STRENGTHEN TECHNICAL AND INSTITUTIONAL CAPACITIES .....	16
2.4. TECHNOLOGICAL SUPPORT .....	24
2.5. SYSTEMATIC OBSERVATION, SCIENCE AND CLIMATE SERVICES.....	27
2.6. KNOWLEDGE AND INFORMATION PROVISION AND SHARING.....	33
<b>3. CONCLUDING REMARKS .....</b>	<b>37</b>
<b>ANNEXES.....</b>	<b>38</b>
ANNEX 1: MAIN STEPS UNDER EACH OF THE ELEMENTS OF THE PROCESS TO FORMULATE AND IMPLEMENT NATIONAL ADAPTATION PLANS .....	38
ANNEX 2: OVERVIEW OF ADAPTATION FUNDS UNDER THE CONVENTION AND ITS KYOTO PROTOCOL .....	39
ANNEX 3: EXAMPLES OF TECHNICAL SUPPORT PROVIDED BY DEVELOPED COUNTRIES TO DEVELOPING COUNTRIES FOR ACTIVITIES RELEVANT TO THE PROCESS TO FORMULATE AND IMPLEMENT NATIONAL ADAPTATION PLANS .....	40
ANNEX 4: LIST OF BILATERAL DONOR AGENCIES.....	41
ANNEX 5: SUPPLEMENTARY MATERIALS TO THE TECHNICAL GUIDELINES FOR THE PROCESS TO FORMULATE AND IMPLEMENT NATIONAL ADAPTATION PLANS .....	42
ANNEX 6: MEMBERS OF THE ADAPTATION COMMITTEE.....	43
<b>LIST OF ABBREVIATIONS.....</b>	<b>44</b>

# 1. INTRODUCTION

Climate change impacts are already being felt around the world, as demonstrated by increases in mean global temperature, shifts in the seasons and changes in the frequency of extreme weather events. In developing countries, and in least developed countries (LDCs) in particular, the adverse effects of climate change are already undermining countries' sustainable development prospects. While the reduction of greenhouse gas emissions is critical to slow the rate and magnitude of climate change, adaptation is needed to address current and future impacts.

In response, the Conference of the Parties (COP) of the United Nations Framework Convention on Climate Change (UNFCCC) established a process to formulate and implement national adaptation plans (also referred to in this publication as the NAP process) as a means of identifying medium- and long-term adaptation needs, and developing and implementing strategies and programmes to address those needs.

The objectives of the NAP process are:

- To reduce vulnerability to the impacts of climate change by building adaptive capacity and resilience;
- To facilitate the integration of climate change adaptation, in a coherent manner, into relevant new and existing policies, programmes and activities, in particular development planning processes and strategies, within all relevant sectors and at different levels, as appropriate.<sup>1</sup>

The NAP process is guided by the following principles:

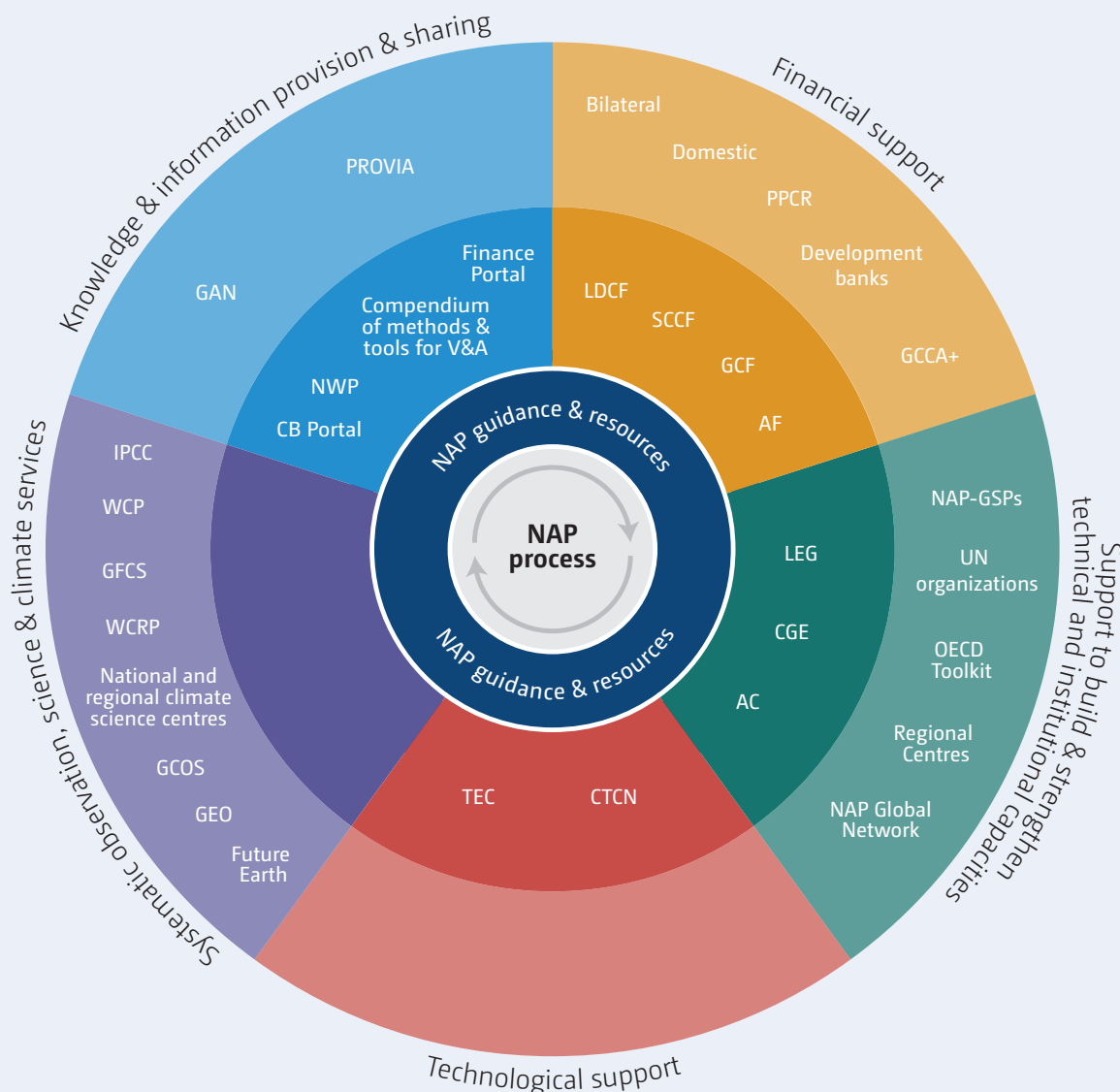
- Be undertaken in accordance with the Convention;
- Follow a country-driven, gender-sensitive, participatory and fully transparent approach, taking into consideration vulnerable groups, communities and ecosystems;
- Be based on, and guided by, the best available science and, as appropriate, traditional and indigenous knowledge, and by gender-sensitive approaches, with a view to integrating adaptation into relevant social, economic and environmental policies and actions, where appropriate;
- Not be prescriptive, nor result in the duplication of efforts undertaken in-country, but facilitate country-owned, country-driven action.

Structural handicaps and capacity gaps, as well as resource limitations, often hamper countries' capacity to adapt on their own. Thus, while national leadership and country-ownership is fundamental, for many developing countries, support and cooperation from regional, international and bilateral partners are also important for effectively addressing adaptation.

## 2. SUPPORT AVAILABLE TO DEVELOPING COUNTRIES

Support comes in various forms, but can be clustered under the following six categories: guidance and resources; financial support; support to build and strengthen technical and institutional capacities; technological support; systematic observation, science and climate services; as well as knowledge and information provision and sharing (see figure 1). Countries' support needs vary depending on national circumstances and progress in the process to formulate and implement NAPs. While some countries need all forms of support, others may only need limited support.

Figure 1. Overview of support available for the process to formulate and implement national adaptation plans\*



\* The dark colored areas indicate support available under the Convention and its Kyoto Protocol the pale colored areas support available outside.

This section provides a snapshot of available support under the Convention, and also touches upon additional support provided by multilateral, regional and bilateral institutions. Some of the organizations or programmes presented have more than one function, and the support they provide spans over several support areas. For example, some organizations provide both financial and technical support. However, in the publication, information relating to these organizations and programmes will be found under the support area for which they have a more prominent role. The private sector could be another source of support for countries for their NAP process but it was not possible at this point to feature this support area, given the lack of precise information.

## 2.1. GUIDANCE AND RESOURCES

Figure 2. Elements and principles of the process to formulate and implement national adaptation plans





The **initial guidelines** developed by the COP for the process to formulate and implement NAPs divide the process into four elements (see figure 2):

- A. Laying the groundwork and addressing gaps;
- B. Preparatory elements;
- C. Implementation strategies;
- D. Reporting, monitoring and review.

The technical guidelines, developed by the Least Developed Countries Expert Group (LEG) following a COP mandate, are designed to further elaborate on these four elements and offer a range of options for dealing with each one. The activities are arranged into steps and based on a broad literature review and inputs from stakeholders. Countries can choose those steps that add value to their planning processes and sequence NAP activities based on their needs. The table contained in annex 1 presents possible steps.

The **technical guidelines** suggest the clustering of the activities and steps into workstreams that would be managed by different stakeholders as a possible approach to conduct the NAP process. The coordination mechanism of the process would be responsible for connecting the workstreams and managing the flow of information between them. Below are examples of workstreams:<sup>2</sup>

- Adaptation capacity and enabling environments: gap and needs analysis;
- Monitoring and evaluation;
- Interfacing with policy and decision makers under the NAP process;
- Integrating climate change adaptation in national planning;
- Vulnerability and adaptation assessment;
- Education, training, communication, and awareness raising;
- Reporting.

To further assist country teams, the LEG developed a publication entitled “Overview of the process to formulate and implement NAPs and the technical guidelines”. The publication presents visual supports to help link the technical guidelines to the objectives of the NAP process, the essential functions and the workstream approach.

**NAP Central** is a universally accessible, web-based repository and hub for information pertinent to the NAP process. Developed by the LEG, the main target audience for NAP Central is NAP teams in developing countries, with a particular focus on the LDCs. It features three categories of webpages:

1. **Country portals:** these provide countries with the opportunity to manage their NAP materials, including archiving documents. They also serve as submission portals through which countries can share outputs and outcomes of their NAPs with the secretariat;
2. **Collaborative sites:** user groups include the LEG, the Adaptation Committee and any relevant organizations;
3. **Public pages:** these include the NAP technical guidelines and relevant resources on the process to formulate and implement NAPs, information on support, event pages, country dashboards, navigators and case studies.

**Box 1. How can a country access its country portal in NAP Central**

- Go to country URL <process.unfccc.int/sites/napparties/countryname>  
e.g. <process.unfccc.int/sites/napparties/Malawi>
- Enter username and password (to be provided by the secretariat).

**Box 2. Selected references**

UNFCCC. **Decision 5/CP.17, annex.** Available at <bit.ly/1MuSpUw>.

UNFCCC. **Adaptation Committee.** The state of adaptation under the UNFCCC. 2013. Available at <bit.ly/1mqemC4>.

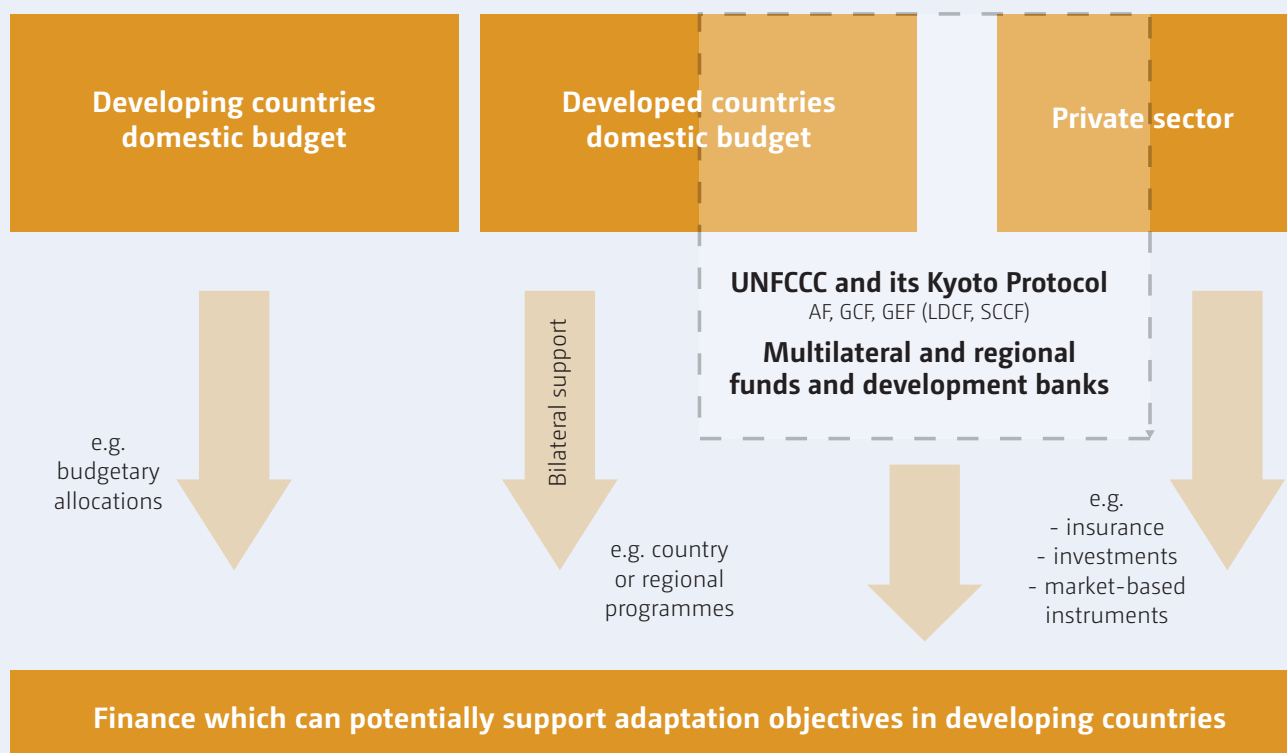
UNFCCC. **Least Developed Countries Expert Group.** Technical guidelines for the national adaptation plan process. 2012. Available in English, French, Portuguese and Spanish at <unfccc.int/7279>.

UNFCCC. **Least Developed Countries Expert Group.** The NAP process: a brief overview. 2012. Available in English, French and Portuguese at <unfccc.int/7279>.

UNFCCC. **Least Developed Countries Expert Group.** Overview of the process to formulate and implement NAPs and technical guidelines. 2015. Available in English, French and Portuguese at <unfccc.int/6110>.

## 2.2. FINANCIAL SUPPORT

Figure 3. Financial support for adaptation



Source: Adapted from R. Klein. 2011. Ensuring equity, transparency and accountability for adaptation finance. SEI Policy Brief.

There is a variety of financial support available from different sources under and outside the Convention and its Kyoto Protocol (see figure 3 and annex 2). Funding windows differ according to the type of adaptation measures they support, the amount of funding they provide, access procedures, financing instruments and eligible implementing agencies.

## Financial support under the Convention and its Kyoto Protocol

Funding for adaptation under the Convention and its Kyoto Protocol is available through the Least Developed Countries Fund (LDCF) and the Special Climate Change Fund (SCCF) managed by the Global Environment Facility (GEF), as well as the Green Climate Fund (GCF) and the Adaptation Fund (AF). The COP has requested the LDCF, SCCF and GCF to provide funding for the process to formulate and implement NAPs, and these funds have started to make arrangements to offer countries such support.

### The Green Climate Fund

In 2010, the COP agreed to establish the GCF and decided that a significant share of new multilateral funding for adaptation should flow through it. The GCF is to support climate change related projects, programmes, policies and other activities in developing country Parties using thematic funding windows, including one for adaptation.

The GCF has established a readiness and preparatory support programme (readiness programme) to provide capacity-building for countries to access GCF funding. The programme is particularly targeting countries with lower capacity to access the Fund's resources, such as the LDCs, Small Islands Developing States (SIDS) and the African countries. It helps in identifying strategic investment priorities and in preparing or strengthening development strategies or plans, such as NAPs.

Countries that are interested in securing readiness support for NAPs need to approach the GCF at their earliest convenience. For example, a conversation between the GCF and the country could take place to understand the country's needs, which could then lead to the development of a budget and the allocation of readiness funding to support the formulation of NAPs. The readiness programme could also be used to identify and prepare the country's already conceptualised projects and programmes for financing opportunities.

By the end of 2014, the GCF had mobilized USD 10.2 billion, 58.5% of which was converted into contribution agreements by May 2015. Formally reaching the resources requirement for effectiveness of the Fund, the GCF expects to make its first financial commitments for projects and programmes in developing countries in November 2015.

---

**Box 3. How to apply to the readiness programme of the GCF**

Readiness requests are made directly to the GCF Secretariat ([countries@gcfund.org](mailto:countries@gcfund.org)) by submitting a request form provided by the GCF.<sup>3</sup> The readiness request form summarizes the request, objectives it will achieve and delivery modality. The Country Programming Division of the GCF Secretariat assists countries in developing a full readiness funding proposal based on the readiness requests made. Following a discussion with the GCF Secretariat, countries submit this full readiness funding proposal with information such as detailed description of activities, implementation plan, and budget. The Secretariat has set itself to respond promptly to all readiness requests.<sup>4</sup> More information on the readiness programme is available at [www.gcfund.org/operations/resource-guide.html](http://www.gcfund.org/operations/resource-guide.html).

---

### The Global Environment Facility

Developing countries can access GEF managed LDCF/SCCF resources to support the NAP process, within the scope defined by the initial guidelines,<sup>5</sup> and can use existing GEF modalities to do so, including medium-sized projects, full-sized projects and programmatic approaches. Since its inception, and as at August 2015, the GEF had provided USD 931.5 million through the LDCF and USD 284.4 million through the SCCF for adaptation projects and programmes, as well as enabling activities.

The GEF, through the LDCF and SCCF, also finances global support programmes to raise awareness of the NAPs, take stock of countries' progress, and provide initial support in the form of capacity-building and planning. The GEF finances the National Adaptation Plan Global Support Programmes (NAP-GSPs) for LDCs and developing countries that are not LDCs. For more information, see box 4 and section 2.3.

---

**Box 4. GEF support towards the process to formulate and implement NAPs as at September 2015**

- USD 2.19 million from the LDCF towards the global project Assisting Least Developed Countries with Country-Driven Processes to Advance National Adaptation Plans
  - USD 5.09 million from the SCCF towards the project Assisting non-LDC Developing Countries with Country-driven Processes to Advance National Adaptation Plans
  - USD 6.95 million approved in January 2015 towards the project Expanding the Ongoing Support to Least Developed Countries with Country-driven Processes to Advance National Adaptation Plans
  - Since September 2014, nine LDCs have requested USD 43.05 million in LDCF support towards national, full-sized projects to advance their NAP processes.<sup>6</sup> Additional project proposals contain specific components that would advance LDCs' NAP processes.
- 

**Box 5. For more information about the GEF**

More information and contacts are available at [www.thegef.org/gef/adaptation](http://www.thegef.org/gef/adaptation).

---

### The Adaptation Fund

The Adaptation Fund (AF) under the Kyoto Protocol seeks to finance climate change adaptation projects and programmes in developing countries. The AF has pioneered direct access modalities that allow developing countries to access financing from the Fund directly, without international intermediaries, using an accredited National Implementing Entity (NIE).

NIEs and regional implementing entities can strengthen their capacity to receive and manage climate financing through the readiness programme set up by the AF. The programme offers assistance for direct access in the form of grants for technical assistance and South-South cooperation for adaptation and resilience building in key development sectors. Technical assistance grants are allocated to NIEs to help them strengthen their capacity, in particular in the areas of environmental and social risk management, as they design and implement adaptation projects. With the grant, NIEs can seek support from international or national consultants on a short-term assignment. The South-South cooperation grant enables developing countries to receive support from an accredited NIE in one or more of the following areas:

- A. Identifying potential NIE candidates;
- B. Assisting NIE candidates in the preparation of applications to be submitted to the Fund;
- C. Providing support and advice during the application process. NIEs accredited by the AF are well positioned to get fast-track accreditation as NIEs under the GCF.

As at 31 July 2015, the AF had allocated USD 318 million for adaptation projects and programmes, project formulation activities, and South-South cooperation grants for accreditation support, in 50 vulnerable developing countries. While the AF has a mandate to support concrete adaptation projects and programmes, all 48 approved AF projects and programmes include activities towards development of adaptation capacities at the national or sub-national level, laying an important foundation for the NAP process.

---

#### **Box 6. How to apply to the Adaptation Fund**

To apply, follow instructions available at [www.adaptation-fund.org/apply-funding/apply](http://www.adaptation-fund.org/apply-funding/apply).

---

### Financial support outside of the UNFCCC process

Several financial windows exist outside of the UNFCCC process for addressing adaptation, including for the NAPs. Some of them have a global reach, while others have a regional reach or focus on a specific sector or theme.

#### **Financial windows with a global reach**

Financial windows with a global reach include global programmes that provide financial and technical support to developing countries. Programme objectives help to inform country engagement and outline the requirements to access funding. This is the case for the Pilot Program for Climate Resilience (PPCR) and the Global Climate Change Alliance (GCCA and its replacement GCCA+).

The **PPCR** finances technical assistance and investments to support countries' efforts to integrate climate risks and resilience into core development planning and implementation. The first phase of the PPCR (2008-2014) involved 11 pilots comprising nine stand-alone country pilots and two regional programmes. A second phase of the PPCR has been initiated and as of May 2015, 10 new countries were receiving PPCR funding to prepare their strategic programmes.

The **GCCA+** is an initiative of the European Union, providing technical and financial support to LDCs and SIDS to integrate climate change into their development policies and budgets, and to implement adaptation projects and programmes. The GCCA+ is particularly keen to support

countries that have climate policy or plans in place, or that intend to do so. Hence, countries that are embarking on the NAP process and are undertaking activities that contribute to the formulation of their NAPs are good candidates.

---

#### **Box 7. How to apply to the GCCA+**

Government agencies not already benefiting from GCCA+ technical and financial support, but that are interested in engaging in such a programme, should formally express their interest through the EU delegation to their country. The EU delegation, in collaboration with the European Commission's headquarters, will assess whether the partner country meets the selection criteria for GCCA+ funding and whether funds are available. In parallel, a dialogue can start on possible areas of intervention and priorities. If no funding is available at the time of the request, countries may be placed on a waiting list until new funding becomes available. For more information, see <[bit.ly/1JVobn](http://bit.ly/1JVobn)>.

---

Additional support to developing countries is provided through bilateral support from developed countries. Although such support is generally of a broader nature, developed countries recognize that it can contribute to the NAP process. Annex 3 provides examples of such support and annex 4 presents a non-exhaustive list of bilateral donor agencies. Interested developing countries may wish to communicate their NAP-related financial needs to donors, for example at donor roundtables organized in their country. Some countries have already engaged in such conversation with donor partners and have received tailored bilateral funding to support the formulation and implementation of their NAPs. For example, Indonesia and Viet Nam received funding from Japan and Jamaica from the USA to undertake part of their NAP process.

South-South cooperation is another avenue for obtaining bilateral support for the NAP process, including financial support. China, for example, has indicated that it will set up a Fund for South-South cooperation on Climate Change.<sup>7</sup>

#### **Financial windows with a regional reach**

The **Multilateral Development Banks (MDBs)** lie at the crossroads between global and regional reach. A few of them operate at a global level (e.g. the World Bank) but most focus on a particular region (e.g. the African Development Bank and the Asian Development Bank).

As implementing entities, the MDBs channel funding from external sources (e.g. from the LDCF or Adaptation Fund) to developing countries. In addition, most MDBs that operate in developing countries use their own resources to fund parts of, or whole, adaptation projects or elements of projects that provide adaptation benefits. Thus far, the energy, transport, built environment, infrastructure and agriculture sectors have all benefited from MDB funding. The majority of funding is made available in the form of loans, and to a much lesser extent, grants.<sup>8</sup>

The **Africa Climate Change Fund**, a bilateral thematic trust fund with an initial contribution of EUR 4.725 million from Germany, was established to support African countries in becoming more resilient to climate change, and in transitioning to sustainable low-carbon growth. It is hosted and managed by the African Development Bank. Technical assistance for the NAP process is one of the fundable activities, and since August 2014, countries have been able to submit their project proposals.

---

#### **Box 8. How to apply to the Africa Climate Change Fund**

Contact the Africa Climate Change Fund coordinator  
Ms. Florence Richard (email: [f.quintanilha@afdb.org](mailto:f.quintanilha@afdb.org))  
Website <[bit.ly/1hN9qLW](http://bit.ly/1hN9qLW)>

---

More generally, **regional development banks**, regardless of whether they have a specific climate change fund, can also be a source of funding for adaptation, in particular for initiatives which demonstrate a close link with national development objectives. Further information on some of the regional development banks is available at <[www.idfc.org/Default.aspx](http://www.idfc.org/Default.aspx)>.

### Thematic financial windows

**The Local Climate Adaptive Living Facility (LoCAL)** is a mechanism established by the UN Capital Development Fund in 2011 dedicated to supporting local governments in LDCs in addressing climate change adaptation. It does this by supporting activities that increase awareness of and response to climate change at the local level; integrate climate change adaptation into local government's planning and budgeting systems; and increase the amount of finance available to local governments for climate change adaptation.

LoCAL combines performance-based climate resilience grants, which ensure programming and verification of climate change expenditures at the local level, with technical and capacity-building support.

To date, LoCAL has provided grants to 29 local governments. By the end of 2015, an additional dozen local governments are to benefit from the mechanism. As more LDCs have expressed interest in the mechanism, LoCAL is seeking to accommodate their requests.

---

#### Box 9. For more information about the Local Climate Adaptive Living Facility

Email: [LoCAL.Facility@uncdf.org](mailto:LoCAL.Facility@uncdf.org)

Website: <[www.local-uncdf.org](http://www.local-uncdf.org)>

---

To help developing countries navigate the evolving and complex climate finance architecture and gain **access to adaptation finance**, the Organization for Economic Co-operation and Development (OECD) has developed a toolkit,<sup>9</sup> in collaboration with the GEF, that aims to provide practical and technical solutions for countries that are tailored to their needs and circumstances. The toolkit is aligned with the elements of the NAP process, and includes an annex with a summary of readiness programmes that countries could embark on to enhance access to adaptation finance, including for their NAP process.

In addition, the OECD's Development Assistance Committee (DAC) statistics provide an integrated picture of both bilateral and multilateral climate-related external development finance flows. More information on the methodologies, access to the most recent data on adaptation is available at <[bit.ly/1W2im2l](http://bit.ly/1W2im2l)>.

### Additional information on sources of funding for adaptation

The UNFCCC's **Finance Portal**, available at <[bit.ly/1iAkYmt](http://bit.ly/1iAkYmt)>, provides an overview of activities funded in developing countries, and the sources of funding. The information can be searched by recipient country and source of funding.

---

**Box 10. Selected references**

**Adaptation Fund.** 2010. Accessing resources from the Adaptation Fund – the handbook. Available in the six UN languages at <[www.adaptation-fund.org/document/adaptation-fund-handbook](http://www.adaptation-fund.org/document/adaptation-fund-handbook)>.

**Global Climate Change Alliance+.** 2014 Leaflet. Available at <[bit.ly/1PGWKL7](http://bit.ly/1PGWKL7)>.

**Green Climate Fund.** Engaging with the Green Climate Fund – A resource guide for national designated authorities and focal points of recipient countries. Available at <[bit.ly/1GtfFOK](http://bit.ly/1GtfFOK)>.

**Green Climate Fund.** Readiness Programme Overview. Available at <[bit.ly/1NRvZfq](http://bit.ly/1NRvZfq)>.

**Global Environment Facility.** Accessing resources under the Least Developed Countries Fund. 2011. Available in English, French and Portuguese at <[www.thegef.org/gef/node/4433](http://www.thegef.org/gef/node/4433)>.

**Global Environment Facility.** Accessing resources under the Special Climate Change Fund. 2011. Available in English, French and Spanish at <[www.thegef.org/gef/node/4434](http://www.thegef.org/gef/node/4434)>.

**Climate Investment Fund.** An overview of the CIF – Governance and programming information. 2015. Available in English, French and Spanish at <[bit.ly/1MXyMOB](http://bit.ly/1MXyMOB)>.

**Africa Climate Change Fund.** Helping Africa access climate finance for a transition to climate smart development. 2014. Available at <[bit.ly/1hN9qLW](http://bit.ly/1hN9qLW)>.

---

## 2.3. SUPPORT TO BUILD AND STRENGTHEN TECHNICAL AND INSTITUTIONAL CAPACITIES

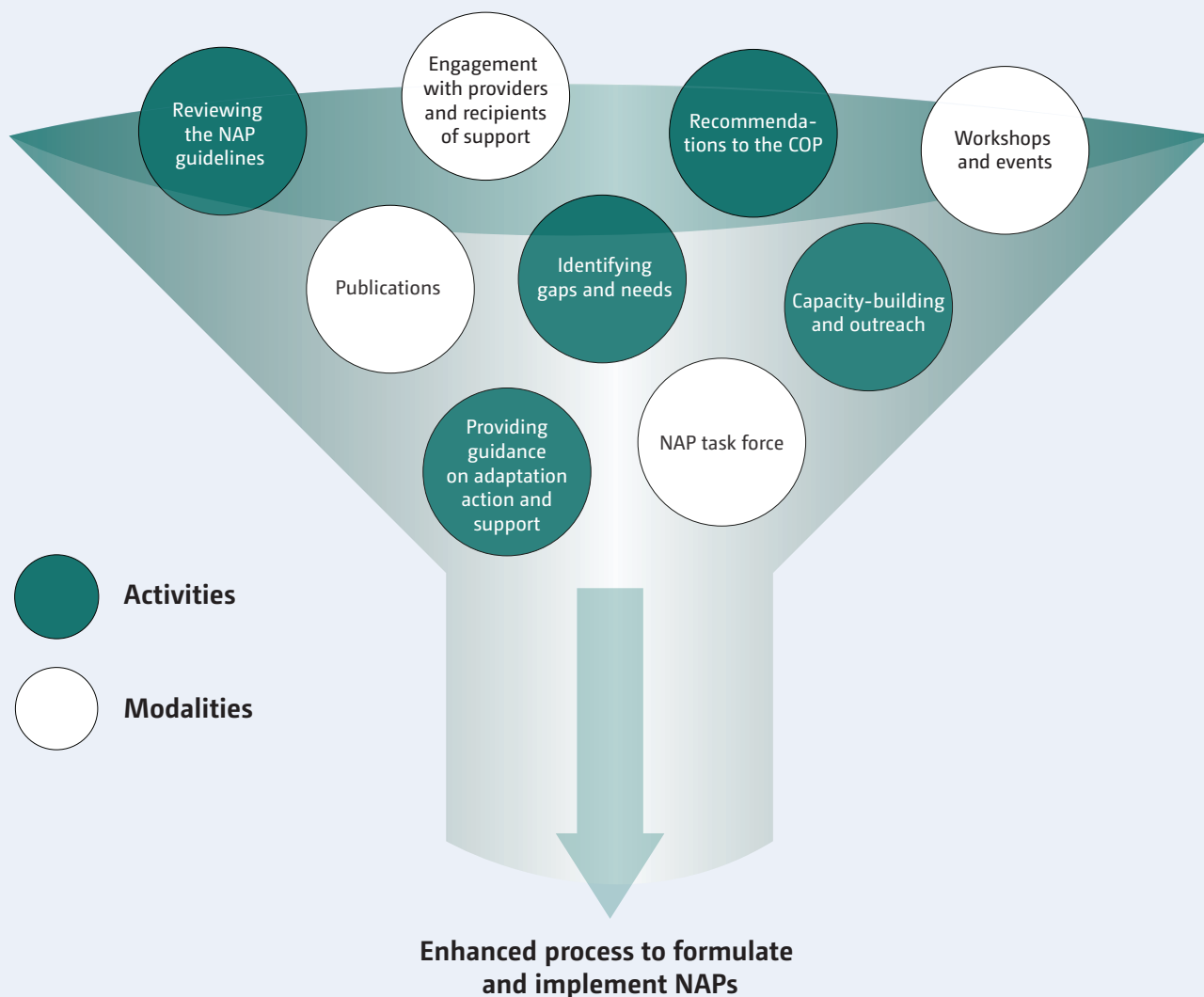
An important step in addressing adaptation at the national level is a systematic analysis of capacity gaps in the national adaptation structures and systems, and the development of a strategy to address those gaps. This will include the identification of options for strengthening and/or establishing various institutions, bodies, programmes, facilities, policies and legislative frameworks.<sup>10</sup> Several avenues exist to assist developing countries in addressing such gaps in the context of the process to formulate and implement NAPs, some of which are presented below.

### The Adaptation Committee

The Adaptation Committee is the overall advisory body to the COP on adaptation to the adverse effects of climate change. It promotes the implementation of enhanced action on adaptation in a coherent manner under the Convention. The list of current members can be found in annex 6.



Figure 4. The role of the Adaptation Committee in supporting the process to formulate and implement NAPs



The Adaptation Committee provides guidance to address gaps and needs for the NAP process through: developing recommendations for consideration by the COP, collaborating with relevant entities, and offering platforms for sharing expert knowledge on issues relevant to the NAP process (see figure 4). The Adaptation Committee also scopes out the “landscape” of organizations that support the process and the strategic steps that they could take to scale up their support. In addition, the Adaptation Committee, in collaboration with the LEG and other entities, identifies the role of the UNFCCC in facilitating the delivery of support to all developing countries.

**Box 11. How to contact the Adaptation Committee**

Email: [ac@unfccc.int](mailto:ac@unfccc.int)  
 Website: [unfccc.int/6053](http://unfccc.int/6053)

## The Least Developed Countries Expert Group

The LEG provides technical guidance and support to the LDCs to support them in their adaptation efforts, in particular through the national adaptation programmes of action (NAPAs), the least developed countries work programme and the NAP process. As part of its work programme, the LEG has undertaken various activities to support the NAP process (see figure 5).

The LEG engages a wide range of organizations in undertaking its work through thematic working groups and advisory groups. It works closely with the GEF and its agencies during LEG meetings and related activities – this helps in addressing bottlenecks faced by LDCs in their work on adaptation.

Figure 5. The role of the LEG in supporting the process to formulate and implement national adaptation plans

Developing technical guidelines in English, French, Portuguese and Spanish	Providing information materials (e.g. brochures, CD-ROMs)	Developing technical materials (e.g. on gender, regional synergy)
Identifying, collecting and disseminating best practices and lessons learned	Developing tools e.g. a tool for monitoring, reviewing and assessing progress, effectiveness and gaps under the process to formulate and implement NAPs (PEG M&E tool)	Identifying gaps and needs/support needs for the LDCs on NAPs
Organizing regional training workshops and technical meetings	Developing and maintaining NAP Central	Organizing NAP Expos

---

**Box 12. How to contact the LEG**

Email: LEGhelp@unfccc.int

Website: &lt;unfccc.int/4727&gt;

---

### The Consultative Group of Experts on National Communications from Parties not included in Annex I to the Convention

The Consultative Group of Experts on National Communications from Parties not included in Annex I to the Convention (CGE) has developed training materials on vulnerability and adaptation assessments and has undertaken numerous regional hands-on training workshops. It also offers a compilation of reference materials on steps to integrate adaptation into development planning, and a list of regional centres of excellence that undertake technical work in the area of national communications.

---

**Box 13. How to contact the CGE**

Email: nai\_nc@unfccc.int

Website: &lt;unfccc.int/2608&gt;

---

### Additional support to strengthen technical and institutional capacities

The scope of support available to build and strengthen technical and institutional capacities beyond the UNFCCC is diverse. Similar to the provision of financial support, initiatives geared towards institutional and capacity-building support can have a global reach or focus on a specific region, sector or theme. Institutional and capacity-building support can also be found at the national level.

#### Support with a global reach

The NAP-GSP for LDCs and the NAP-GSP for non-LDCs aim to strengthen the institutional and technical capacities of countries for the iterative formulation of comprehensive NAPs. The programme offers:

- A. One-on-one on-demand technical assistance to get started on the NAP process; for example through stocktaking missions to assist national teams in reviewing plans and activities and country-level training, including approaches to skills-assessments and basic economics of adaptation;
- B. Tools and training to support key steps of the NAP process;
- C. Facilitation of exchange of lessons and knowledge through South-South and North-South cooperation, including through knowledge management and information sharing.

The NAP-GSPs are managed by UNDP and UNEP in collaboration with other partners.<sup>11</sup> The NAP-GSP for the LDCs has been active since 2013. Thus far, 15 LDCs have received direct support from the NAP-GSP for LDCs, including the opportunity to send members of their national team to regional training workshops organized in close collaboration with the LEG. The NAP-GSP for non-LDCs was endorsed by the GEF Secretariat in March 2015 and was launched in July 2015. A

number of developing countries have participated in regional training workshops organized by the LEG and supported by the NAP-GSP.

---

#### Box 14. Examples of NAP-GSP support

- Regional trainings: <[www.undp-alm.org/projects/naps-ldcs/meetings-and-workshops](http://www.undp-alm.org/projects/naps-ldcs/meetings-and-workshops)>
  - Country initiatives: <[www.undp-alm.org/projects/naps-ldcs/country-initiatives](http://www.undp-alm.org/projects/naps-ldcs/country-initiatives)>
  - Tools and knowledge sharing: <[www.undp-alm.org/projects/naps-ldcs/expected-key-results](http://www.undp-alm.org/projects/naps-ldcs/expected-key-results)>
- 

#### Box 15. How to contact the NAP-GSPs

The NAP-GSPs accept requests on a rolling basis. Countries interested in technical assistance from the NAP-GSPs should send official letters of request through their national UNFCCC focal points to UNDP and UNEP addressed to:

- Ms. Rohini Kohli, email: [rohini.kohli@undp.org](mailto:rohini.kohli@undp.org)
  - Mr. Mozaharul Alam, email: [Mozaharul.Alam@unep.org](mailto:Mozaharul.Alam@unep.org)
- 

The **NAP Global Network** aims to enhance bilateral support for the NAP process and adaptation action in developing countries. Specifically, the Network is working towards the following three objectives:

- Improving coordination among bilateral development partners;
- Facilitating peer learning and exchange among practitioners from developing countries and bilateral development partners on the challenges and opportunities associated with the NAP process;
- Supporting enhanced leadership on adaptation at the national level to enable better coordination of domestic and international actors in the NAP process.

Participation in the NAP Global Network is open to all on an individual basis. To date, Network participants mainly consist of decision makers and practitioners from various sectors working on the NAP process in developing countries, as well as representatives of bilateral development partners providing support for adaptation. Participants include those outside of climate and environmental agencies, as well as experts and civil society representatives working on the NAP process.

A Steering Committee provides vision and strategic direction to the Network—it consists of 11 members with representation by developing country adaptation practitioners<sup>12</sup> and bilateral development partners.<sup>13</sup> The Network Secretariat based at the International Institute for Sustainable Development (IISD) manages the day-to-day operations of the Network. Germany and the United States provide financial support for its operation.

---

#### Box 16. For more information about the NAP Global Network

Email: [info@napglobalnetwork.org](mailto:info@napglobalnetwork.org)

Website: <[www.napglobalnetwork.org](http://www.napglobalnetwork.org)>

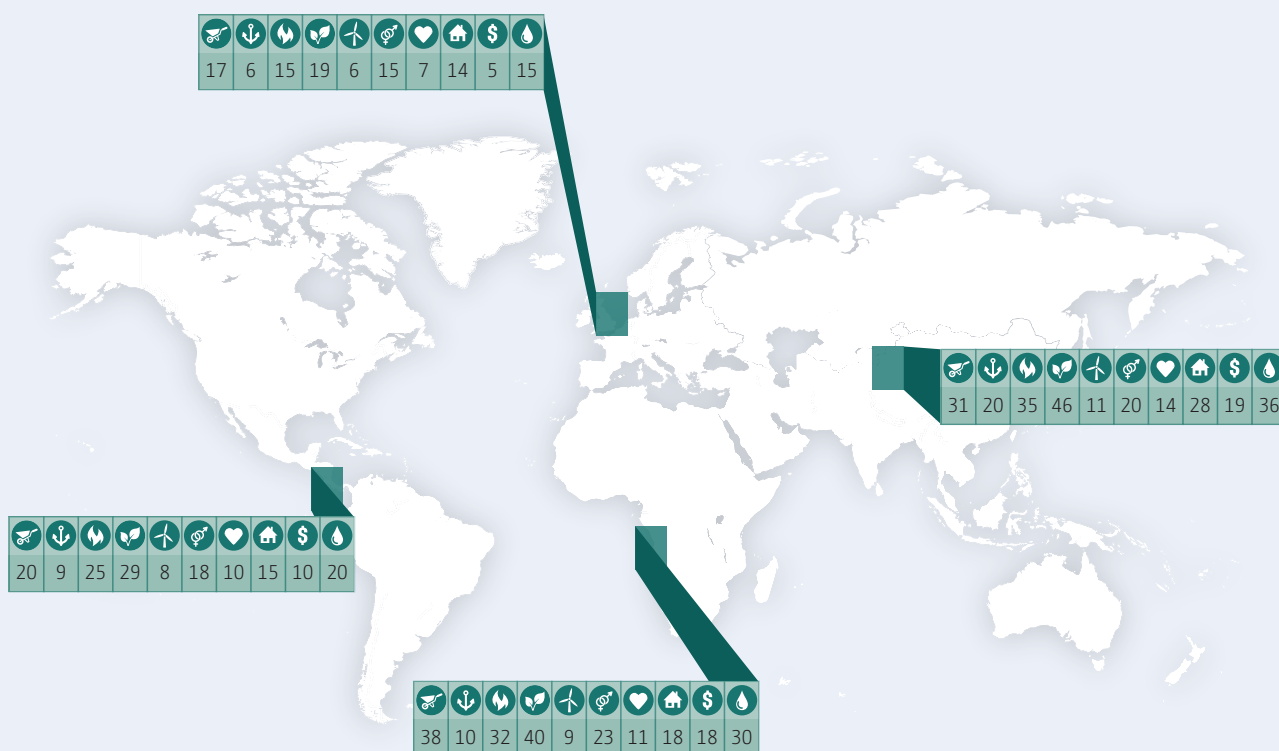
To participate in the Network, sign up on the Network website.

---

### Institutional and capacity-building support with a regional reach

Many regional centres and networks are aligning their adaptation work with the needs identified in regional and national development plans, including the process to formulate and implement NAPs.<sup>14</sup> Although not all are providing direct support to countries for the NAP process, many provide support in relevant areas, such as: the development of tools to identify adaptation priorities; the preparation of a pipeline of adaptation projects capable of attracting financing; and impact, vulnerability and adaptation assessments. Figures 6 and 7 show the number of regional centres, networks and international organizations working regionally providing adaptation support by sector and theme respectively. A non-exhaustive list of centres and networks is available via <unfccc.int/8199>.

Figure 6. Number of support providers by sector



#### Sectors











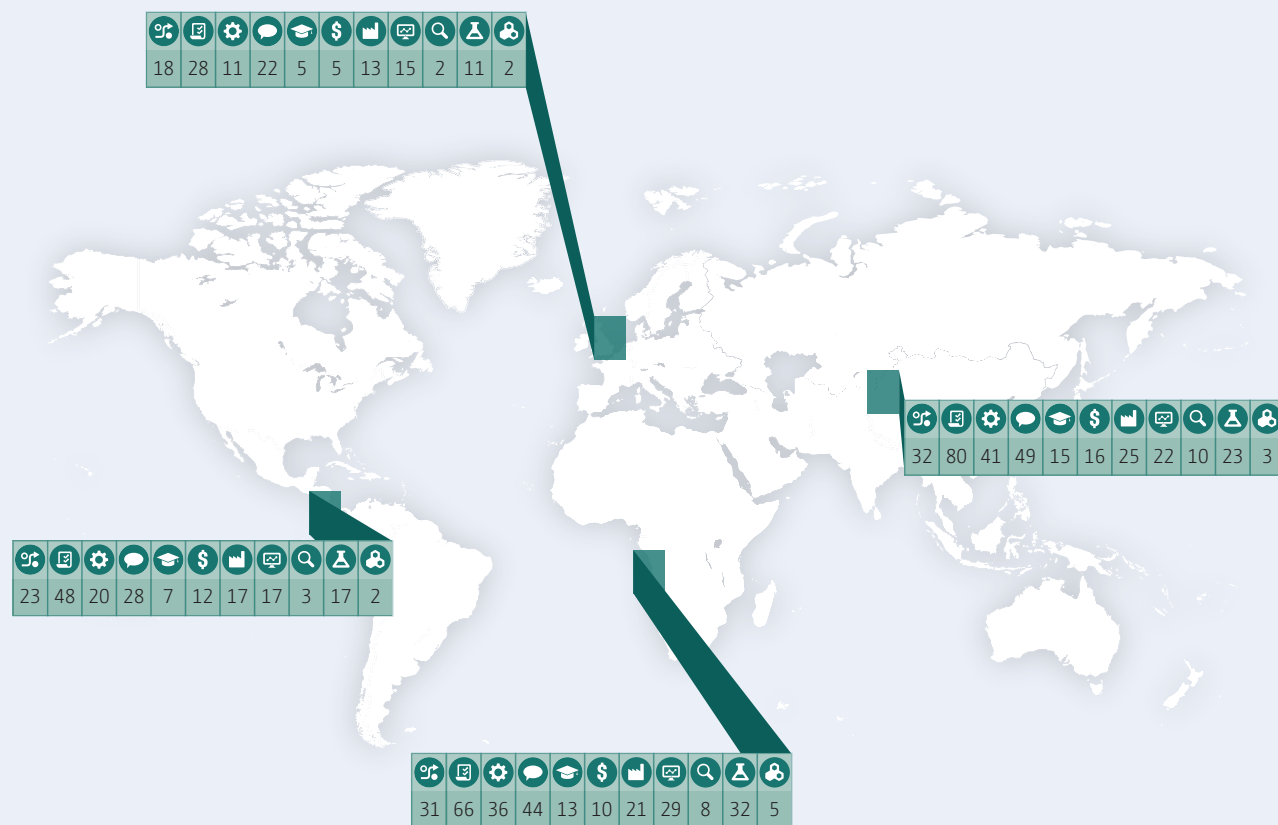
-  Agriculture
-  Ecosystems and biodiversity
-  Health
-  Coastal areas
-  Energy
-  Human settlements and infrastructure
-  Disaster risk reduction
-  Gender
-  Socio-economic activities
-  Water resources

Figure 7. Number of support providers by themes



### Themes

- Adaptation and vulnerability assessments
- Adaptation policy, planning and implementation
- Capacity-building

- Communication and awareness-raising
- Education and training
- Financial support
- Institutional arrangements

- Monitoring and evaluation
- Observation and scenarios
- Science and research
- Technology

### Institutional and capacity-building support with a sectoral or thematic scope

Various organizations with a sectoral or thematic focus are developing **supplementary materials to the technical guidelines for the NAP process**. Some organizations have already published these, while others are under development. Annex 5 provides the current list of supplementary materials.

In addition, specialized organizations provide technical assistance in targeted sectors or for specific themes. Examples of such assistance include:

- In **agriculture**, the Food and Agriculture Organization of the United Nations (FAO) provides capacity-building to developing countries to enable the assessment of the long-term impacts of climate change on the sector. FAO also offers technical support for the implementation of risk management practices in the agriculture sector, such as the use of stress-tolerant crop varieties and soil and water conservation.
- In **public health**, the World Health Organization (WHO) manages global projects on adaptation, including for: enhancing early warning and early action systems; building the capacity of national actors; providing pilot interventions for the reduction of specific health risks; and producing documents and sharing lessons learned on addressing the health risks associated with climate change.
- In **water resources**, the Global Water Partnership (GWP) directly supports several countries in their NAP process, for example through stakeholder consultation workshops. The GWP also organizes regional workshops, for example on lessons learned in the implementation of climate change adaptation strategies in the water sector.
- To address **migration issues**, the International Organization for Migration (IOM) manages a project entitled “Migration, environment and climate change: evidence for policy”, with particular emphasis on migration as an adaptation strategy. The IOM has established working groups and held meetings to identify policy needs in order to integrate migration into adaptation planning. It has also developed a training manual for national governments that includes a module on integrating migration into NAPs, with country-specific case studies.
- To integrate **disaster risk management** in national adaptation plans, the United Nations Office for Disaster Risk Reduction assists countries in developing and adopting integrated disaster risk reduction and climate change adaptation strategies, through partnerships with regional institutions. UNISDR also disseminated analysis and climate risk information through biennial Global Assessment Reports.

The work of the Deutsche Gesellschaft für Internationale Zusammenarbeit (GIZ) in providing technical support and conceptual guidance for **monitoring and evaluation (M&E)** of adaptation can also be highlighted. At the national and sub-national level, GIZ supports the development of M&E systems and the integration of adaptation indicators into existing monitoring systems. For capacity development on M&E, a training course is being applied in several countries. In addition, GIZ is conducting a NAP training at country level in cooperation with the NAP-GSP. The target groups are decision-makers, experts and other stakeholders involved in the NAP process. The training aims to provide a general understanding of the conceptual approach of NAPs and the NAP Technical Guidelines, to raise awareness of challenges and opportunities in the NAP process, to identify institutional and financial needs for conducting a successful NAP process, and to familiarize participants with existing NAP support tools and methods.

In an effort to promote a more **integrated approach to the NAP process**, in which sectors would be considered in a holistic way to take into account their interconnectedness and dependencies, a group of organizations and agencies together with the LEG established a **NAP Technical Working Group**.<sup>15</sup> The Group is considering an integrated framework for the NAP process and intends to conduct and document case studies at the national level to elaborate how the integrated framework can be applied.

---

**Box 17. Selected references**

**UNFCCC. Adaptation Committee.** 2014. Institutional arrangements for national adaptation planning and implementation – 2014 Thematic report. Bonn: UNFCCC secretariat. Available at <[bit.ly/1GOAscs](http://bit.ly/1GOAscs)>.

**UNFCCC. Adaptation Committee.** 2014. Information paper: strengthening the understanding of the roles of regional institutions and UN agencies in supporting enhanced adaptation actions in developing countries. Bonn: UNFCCC secretariat. Available at <[bit.ly/1Unxlyl](http://bit.ly/1Unxlyl)>.

**UNFCCC. Least Developed Countries Expert Group.** 2012. Technical guidelines for the NAP process. Bonn: UNFCCC secretariat. Available at <[unfccc.int/7279](http://unfccc.int/7279)> in English, French and Portuguese.

**UNFCCC. Least Developed Countries Expert Group.** 2012. The NAP process: a brief overview. Bonn: UNFCCC secretariat. Available at <[unfccc.int/7279](http://unfccc.int/7279)> in English, French and Portuguese.

**UNFCCC. Least Developed Countries Expert Group.** 2012. NAP Poster: Table of steps, building blocks and sample outputs under each of the four elements of the NAP process. Bonn: UNFCCC secretariat. Available at <[unfccc.int/7279](http://unfccc.int/7279)> in English, French and Portuguese.

**OECD.** Toolkit to enhance access to adaptation finance – for developing countries that are vulnerable to adverse effects of climate change, including LIDCs, SIDS and African States. 2014. Available at <[bit.ly/1iw4ht3](http://bit.ly/1iw4ht3)>.

**UNITAR and NAP GSP.** 2015. Skills Assessment for National Adaptation Planning: how countries can identify the gap. Available at <[bit.ly/1XfjWM3](http://bit.ly/1XfjWM3)>.

---

---

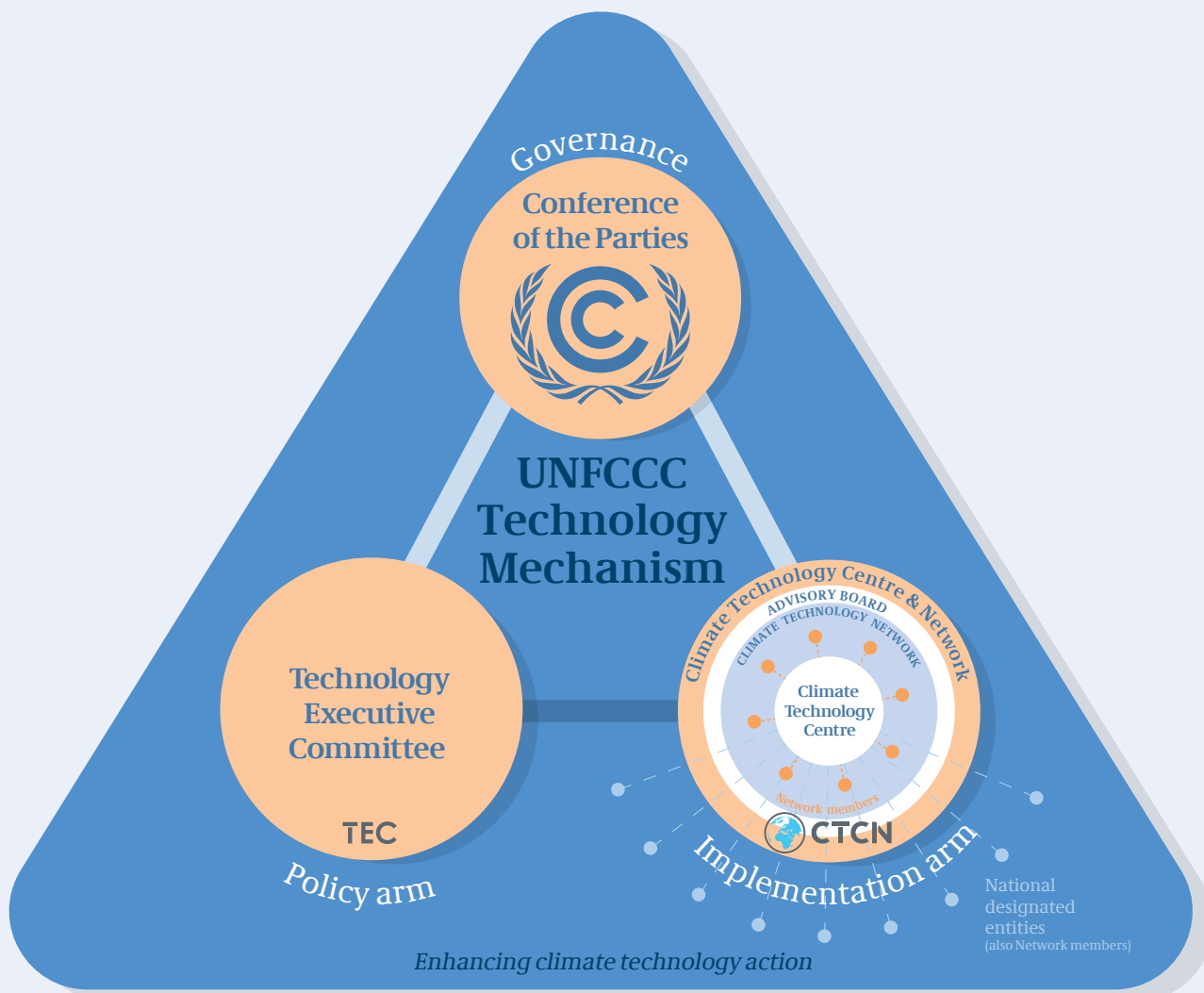
## 2.4. TECHNOLOGICAL SUPPORT

---

Developing countries have expressed the need for support in accessing adaptation technologies, including as part of their process to formulate and implement NAPs. The **Technology Mechanism** established under the COP is a good starting point to address those needs. Through its two components, the Technology Executive Committee (TEC) and the Climate Technology Centre and Network (CTCN), the Technology Mechanism responds to countries' needs for technology development and transfer at both the policy and the implementation levels (see figure 8).



Figure 8. The Technology Mechanism



The **TEC** is the policy arm of the Technology Mechanism. It prepares briefs and provides recommendations with a view to enhancing countries’ technological ability to address climate change. The TEC is currently working with national designated entities (NDEs) to explore ways of establishing linkages between the technology needs assessments (TNAs) and NAPs.

The **CTCN** is the implementation arm of the Technology Mechanism. It is hosted by UNEP with support of UNIDO and a Consortium of 12 additional leading climate technology institutions. CTCN also include a growing network of over 100 members worldwide. It has the following three core services, which are provided to developing countries upon request:

1. Providing technical assistance through its Consortium and Network on specific climate technology sectors;
2. Strengthening access to knowledge on climate technologies; and
3. Fostering collaboration among climate technology stakeholders via the Centre's network of regional and sectoral experts from academia, the private sector and public research institutions.

For example, these services can include the following types of support:

- Technical assistance to support the development, diffusion, scale up or commercial maturity of countries' specific climate technology priorities, including identification of relevant climate technologies solutions, assessment of technology barriers, and piloting and deployment of climate technology solutions;
- Technical assistance for the preparation of policy and planning documents;
- Technical assistance to identify financing opportunities for piloting and scaling up existing climate technology solutions, strengthen project design and business planning; and help facilitate dialogue for private and public sector financing of viable climate technology projects;
- Training and South-South cooperation workshops on priority climate technology solutions.

Specifically related to support for NAPs, the CTCN can provide the following types of support to LDCs and non-LDCs, upon request:

- A. Technical assistance for the formulation of NAPs, complementary to assistance provided by the NAP-GSP and other initiatives and institutions, including through the CTCN's Consortium and Network and by supporting South-South exchange among countries;
- B. Technical assistance to design, deploy, scale up and make commercially viable specific adaptation technology solutions prioritised through the NAP process;
- C. Technical assistance to design financing strategies and facilitate financing dialogue for priorities articulated in NAPs with public and private, as well as domestic and international investors; and
- D. South-South knowledge sharing workshops or training on the formulation of NAPs and financing of priorities articulated in them.

---

#### **Box 18. How to apply for CTCN support**

To receive assistance, countries need to send a request to the CTCN via their nationally-selected focal points or National Designated Entities (NDEs) registered with the UNFCCC (see <[unfccc.int/ttclear/templates/render cms\\_page?TEM\\_ndes](http://unfccc.int/ttclear/templates/render cms_page?TEM_ndes)>).

The short template for submitting requests can be completed in any official UN language (<[www.ctc-n.org/node/1314](http://www.ctc-n.org/node/1314)>). Upon receipt and screening of requests, the CTCN mobilizes its global Consortium and Network of climate technology experts to design and deliver a customized solution tailored to the countries' needs.

Consistent with guidance from the COP and its Advisory Board, the CTCN supports the cost of technical assistance offered by experts on specific climate technology sectors, but is not able to provide direct financing for project implementation.

---

---

**Box 19. Selected references**

**Technology Executive Committee.** Technologies for adaptation in the agriculture sector. TEC Brief #4. 2014. Available at <[bit.ly/1Q5Oqfw](http://bit.ly/1Q5Oqfw)>.

**Technology Executive Committee.** Possible integration of the TNA process with NAMA and NAP processes. TEC Brief. 2013. Available at <[bit.ly/1UoKPtE](http://bit.ly/1UoKPtE)>.

---

## 2.5. SYSTEMATIC OBSERVATION, SCIENCE AND CLIMATE SERVICES

As part of their process to formulate and implement NAPs, countries will want to analyze current and future climate change and impact scenarios. Many countries, in particular LDCs, have reported that data and information gaps constrain this analysis. In this context, scientific information and climate services offered by global, regional and national organizations and programmes are opportunities for countries to make use of robust scientific information and data to inform their adaptation planning.

### International organizations

There are several global initiatives that are particularly active in supporting developing countries in accessing climate data and information and are, increasingly, providing climate services.

### Intergovernmental Panel on Climate Change

The **Intergovernmental Panel on Climate Change (IPCC)** assessments provide balanced and rigorous scientific information that is policy-relevant but not prescriptive. These assessments include the Working Group II assessments on impacts, adaptation and vulnerability, and provide a scientific basis for the development of climate-related policies, including policies that contribute to the NAP process. The fifth assessment report (AR5) 2013-2014 provides a clear and up-to-date view of the current state of scientific knowledge relevant to climate change, broken down into regions and sectors.

In addition, the IPCC Task Group on Data and Scenario Support for Impact and Climate Assessment (TGICA) provides data sets, climate and related socio-economic and environmental scenarios, and other materials (e.g. technical guidelines on the use of scenarios). The TGICA also contributes to capacity-building in the use of data and scenarios in developing countries through a framework for training that focuses on mentorship.

---

**Box 20. For more information about the IPCC**

Contact the IPCC secretariat

Phone: +41-22-730-8208/54/84

Fax: +41-22-730-8025/13

Email : [IPCC-Sec@wmo.int](mailto:IPCC-Sec@wmo.int)

Website: <[www.ipcc.ch/activities/activities.shtml](http://www.ipcc.ch/activities/activities.shtml)>

---

## World Meteorological Organization

The basic infrastructure of the **World Meteorological Organization (WMO)** has been extended to strengthen the capabilities of national meteorological and hydrological services (NMHSs) in generating and delivering up-to-date climate information and prediction products for climate services in support of climate adaptation and risk management.

Accordingly, several WMO designated Global Producing Centres (GPCs) of Long Range Forecasts (LRF) have been established to provide a range of global-scale LRF products. Furthermore, WMO designated Regional Climate Centres (RCCs) are being established to deliver more regionally-focused high-resolution products as well as training and capacity building. GPCs and RCCs constitute integral components of WMO's Global Data Processing and Forecasting System, underpinning the generation of climate information products created by NMHSs. WMO RCCs are centres of excellence that create regional products including long-range forecasts that support regional and national climate activities, thereby strengthening the capacity of WMO members to deliver better climate services.

## Global Framework for Climate Services

The **Global Framework for Climate Services (GFCS)** seeks to enhance the quality, quantity and application of climate information. Through national projects the GFCS is supporting the integration of climate services in NAPs and has produced a supplement to the NAP technical guidelines on climate services for supporting climate change adaptation. The GFCS consists of five components: (1) observations and monitoring, (2) research, modeling, and prediction, (3) Climate Services Information System (CSIS), (4) User Interface Platform (UIP) and (5) Capacity Development (CD), which cuts across all the other four components.

---

### Box 21. For more information about the GFCS

Contact the GFCS office  
 Phone: +41 22 730-8579  
 Fax: +41 730-8037  
 Email: [gfps@wmo.int](mailto:gfps@wmo.int)  
 Website: <[www.gfps-climate.org](http://www.gfps-climate.org)>

---

## World Climate Programme

The **World Climate Programme (WCP)** of the WMO aims to enhance climate services with a focus on user interaction. The programme comprises:

- **World Climate Research Programme (WCRP)**, which adopts a multi-disciplinary approach, organizes and coordinates large-scale observational and modelling projects, including the Coupled Model Intercomparison Projects (CMIP)<sup>16</sup> and CORDEX,<sup>17</sup> and provides the international forum to align efforts of thousands of climate scientists to provide the best possible climate information;
- **Global Climate Observing System (GCOS)**, which has identified the 50 Essential Climate Variables (ECVs) obtained from in-situ, non-space based and satellite monitoring required to support the work of the UNFCCC and the IPCC, and supports implementation through its implementation plans (2004, 2010, 2016), status reports and workshops as well as the GCOS Cooperation Mechanism. The Global Observing Systems Information Center (GOSIC) provides access to data and information identified by GCOS;<sup>18</sup>

- **World Climate Services Programme**, which serves as the WMO Climate Services Information System and part of the GFCS User Interface Platform;
- **PROVIA**, the Global Programme of Research on Climate Change Vulnerability, Impacts and Adaptation. More information on the PROVIA knowledge platform can be found in section 2.6.

---

**Box 22. For more information about the WCP**

Contact the WMO

Phone: +41 22-730-8111

Fax : +41-22-730-81281

Website: <[www.wmo.int/pages/prog/wcp](http://www.wmo.int/pages/prog/wcp)>

---

### Group on Earth Observations

Group on Earth Observations (GEO) is leading a worldwide effort to build a Global Earth Observation System of Systems (GEOSS). The 'GEOSS Portal' offers a single Internet access point for users seeking data, imagery and value-added information relevant to all parts of the globe. It connects users to existing data bases and portals and provides reliable, up-to-date and user friendly information - vital for the work of decision makers, planners and emergency managers.

---

**Box 23. For more information about GEO**

Contact GEO Secretariat

Phone: +41 22 730 8505

Fax : +41 22 730 8520

Email: [secretariat@geosec.org](mailto:secretariat@geosec.org)

Website: <[www.earthobservations.org](http://www.earthobservations.org)>

GEOSS Portal: <[www.geoportal.org/web/guest/geo\\_home\\_stp](http://www.geoportal.org/web/guest/geo_home_stp)>

---

### Future Earth

**Future Earth** is an international hub to coordinate new, interdisciplinary approaches to research on three themes: Dynamic Planet, Global Sustainable Development and Transformations towards Sustainability. It also aims to be a platform for international engagement to ensure that knowledge is generated in partnership with society and users of science. It brings together and works in partnership with existing programmes on global environmental change (DIVERSITAS, the International Geosphere-Biosphere Programme (IGBP), the International Human Dimensions Programme (IHDP) and WCRP).

---

**Box 24. For more information about Future Earth**

Contact Future Earth

Email: [contact@futureearth.org](mailto:contact@futureearth.org)

Website: <[www.futureearth.org](http://www.futureearth.org)>

---

## United Nations Platform for Space-based information for Disaster Management and Emergency Response

The **United Nations Platform for Space-based information for Disaster Management and Emergency Response (UN-SPIDER)** was set up to ensure that all countries and international and regional organizations have access to and develop the capacity to use all types of space-based information to support the full disaster management cycle. UN-SPIDER is achieving this by providing a gateway to space information for disaster management support, by serving as a bridge to connect the disaster management, risk management and space communities and by being a facilitator of capacity-building and institutional strengthening, in particular for developing countries. It is implemented as an open network of providers of space-based solutions to support disaster management activities.

---

### Box 25. For more information about UN-SPIDER

Contact United Nations Office for Outer Space Affairs / UN-SPIDER

Email: [un-spider@unoosa.org](mailto:un-spider@unoosa.org)

Website: [www.un-spider.org](http://www.un-spider.org)

---

## Regional organizations

Many regional organizations offer science and climate services. Particular examples highlighted by representatives from these organizations at recent research dialogues<sup>19</sup> include the Caribbean Community Climate Change Centre (CCCCC), the European Copernicus project, the Asia-Pacific Network for Global Change Research (APN), and the Inter-American Institute for Global Change (IAI).

The CCCCC, in collaboration with a regional network of modelling centres and the Hadley Centre, has developed freely available models and scenarios for the region, as well as a resource for historical and future climate data and information, and analysis tools including for extreme weather events. With memoranda of understanding in place, this work is planned to be expanded to colleagues in the Indian and Pacific Oceans.

The **European Copernicus** project will offer Climate Change Services (C3S) that combine observations of the climate system with the latest science to develop authoritative, quality-assured information about the past, current and future states of the climate in Europe and worldwide.

In the last five years, **APN** has supported over 60 capacity-building projects on a range of issues to support local and national stakeholders' understanding of climate change science and to find effective ways of communicating and influencing decision and policy making. The APN are now in their 20<sup>th</sup> year and have produced a new action agenda (2015-2020) for research, capacity development and science policy.

The **IAI** works to enhance scientific capacity in the Americas, study the impacts of environmental problems and provide useful information and advice to policy makers including on climate change. Its core values are scientific excellence, international cooperation and full and open exchange of data.

---

**Box 26.****For more information about the CCCCC**

Phone: +501 822 1094 or +501 822 1104

Email : [cfuller@caribbeanclimate.bz](mailto:cfuller@caribbeanclimate.bz)

Website: [www.caribbeanclimate.bz](http://www.caribbeanclimate.bz)

**For more information about the European Copernicus project**

Contact: [www.copernicus.eu/main/contact-us](http://www.copernicus.eu/main/contact-us)

Website: [www.copernicus.eu/main/climate-change](http://www.copernicus.eu/main/climate-change) and [climate.copernicus.eu](http://climate.copernicus.eu)

**For more information about the APN**

Phone: + 81 78 230 8017

Email: [info@apn-gcr.org](mailto:info@apn-gcr.org)

Website: [www.apn-gcr.org](http://www.apn-gcr.org)

Action agenda (2015-2020): [www.apn-gcr.org/resources/items/show/1999](http://www.apn-gcr.org/resources/items/show/1999).

**For more information about the IAI**

Phone: + 59 8 260 39552

Email: [iai-uy@dir.iai.int](mailto:iai-uy@dir.iai.int)

Website: [www.iai.int](http://www.iai.int)

---

## National organizations

Some meteorological services and national research centres in developed countries extend their services to developing countries. These include the Met Office Hadley Centre of the United Kingdom of Great Britain and Northern Ireland; the National Centres for Environmental Information, the National Aeronautics and Space Administration (NASA) climate model data services and the National Drought Mitigation Centre of the United States of America; and the Royal Netherlands Meteorological Institute (KNMI) of the Netherlands, which hosts the web-based KNMI Climate Explorer that enables statistical analysis of climate data.

The Yale Science Communications with Impact Network is currently developing the Science 2 Adaptation (S2A) project to deliver communication, information and knowledge resources via digital means in a manner customized to support the NAP process.

---

**Box 27.****For more information about the Met Office Hadley Centre for Climate Science and Services**

Phone: +44 1392 885680

Fax: +44 1392 885681

Email : enquiries@metoffice.gov.uk

Website: <www.metoffice.gov.uk/climate-guide/science/science-behind-climate-change/hadley>

**For more information about the National Centres for Environmental Information**

*For Weather and Climate Data and Products*

Phone: 1-828-271-4800 then press "2"

Fax: 1-828-271-4876

Email: ncdc.orders@noaa.gov

*For Satellite Data and Products*

Phone: +18282 714850 the press "1"

Fax: +18282 714876

Email: ncdc.satorder@noaa.gov

*For Climate Monitoring Products and Analyses*

Email: cmb.contact@noaa.gov

*For Model Data and Products*

Email: nomads.ncdc@noaa.gov

**For more information about the NASA Climate Model Data Services (CDS): NASA Earth Exchange Global Daily Downscaled Projections (NEX-GDDP)**

Email: support@cds.nasa.gov

Website: <cds.nccs.nasa.gov/nex-gddp>

**For more information about the National Drought Mitigation Centre**

Phone: +1 402 472 6707

Fax : +1 402 472 2946

Email : ndmc@unl.edu

Website: <drought.unl.edu>

**For more information about the KNMI Climate Explorer**

Phone: +31 30 22 06 911

Fax : +31 30 22 10 407

Email: oldenborgh@knmi.nl

Website: <climexp.knmi.nl/start.cgi>

**For more information about SzA**

Phone: +1 203-436-5950

Email : paul.lussier@yale.edu

Website: <www.me2umedia.com/#!scwin/c746>

---

**Box 28. Selected References**

IPCC. 2014. Fifth Assessment Report. Available at <www.ipcc.ch/activities/activities.shtml>.

UNFCCC website on science. Available at <unfccc.int/6990>.

---



## 2.6. KNOWLEDGE AND INFORMATION PROVISION AND SHARING

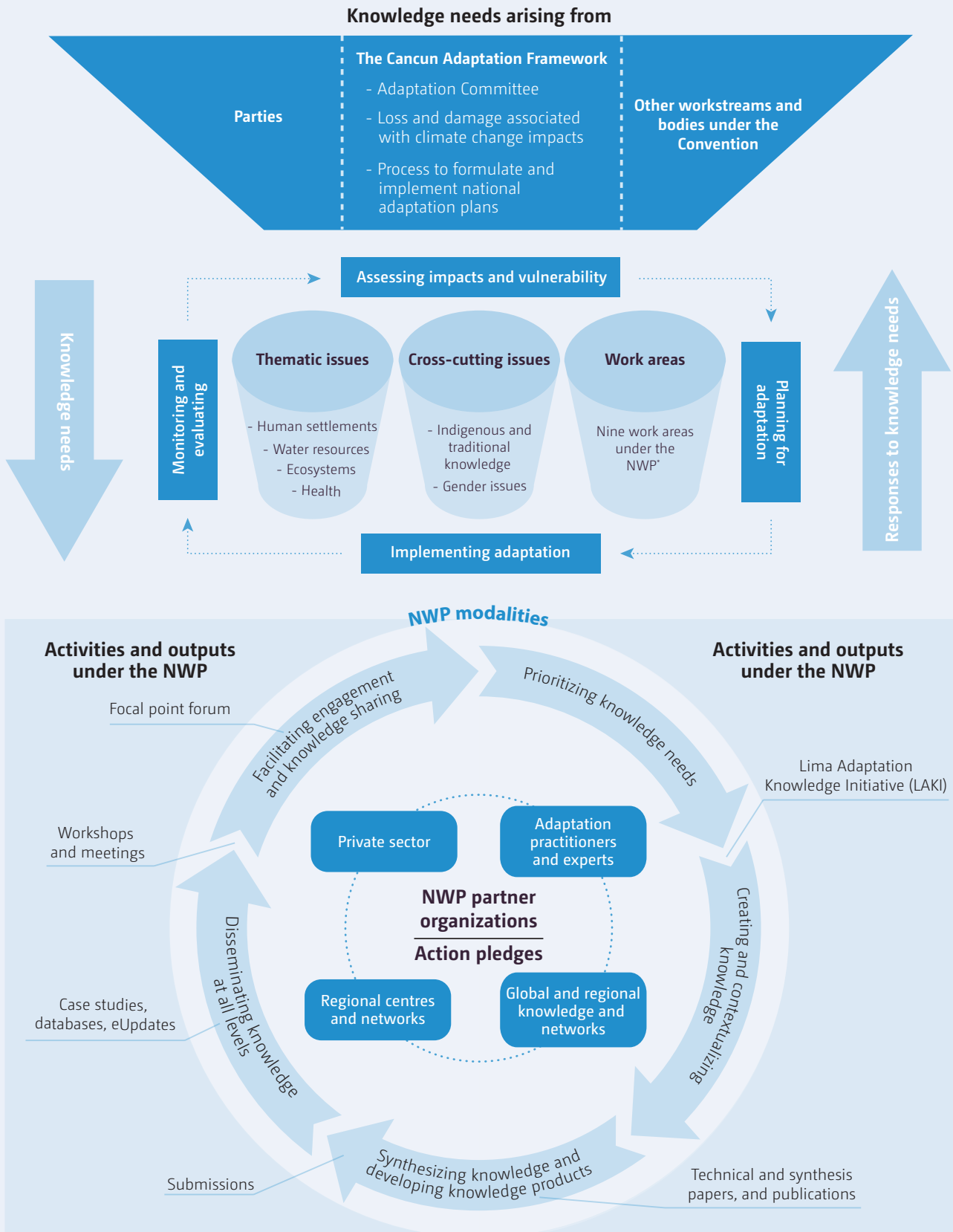
The iterative nature of the process to formulate and implement NAPs means that collection, analysis, synthesis and dissemination of knowledge and information sharing are instrumental for learning and enhancing adaptation efforts over time. This section highlights some existing work programmes under the Convention, knowledge hubs and platforms under the Convention and outside, as a complement to NAP Central.

### The Nairobi work programme on impacts, vulnerability and adaptation to climate change

The Nairobi work programme is established as a knowledge hub on adaptation under the Convention to facilitate and catalyze the development and dissemination of information and knowledge to inform and support adaptation policies and practices at the regional, national and subnational levels through a diverse range of modalities. The Nairobi work programme responds to some of the adaptation knowledge needs, including needs relating to NAPs, by providing a unique opportunity for linking relevant institutions, processes, resources and expertise outside the Convention (see figure 9).

Partner organizations of the Nairobi work programme encompass a broad spectrum of expertise, experience and knowledge, and play an important role in the implementation of activities under the work programme.<sup>20</sup> The Nairobi work programme includes a private sector initiative that facilitates private sector organizations to share with the international community their innovative activities on adaptation to climate change.<sup>21</sup>

Figure 9. The Nairobi work programme (NWP) as an adaptation knowledge hub: Mandates and modalities for knowledge support on adaptation under the UNFCCC



\* Nine work areas: 1. Methods and tools; 2. Data and observation; 3. Climate modelling, scenarios and downscaling; 4. Climate related risks and extreme weather events; 5. Socio-economic information; 6. Adaptation planning and practices; 7. Research; 8. Technologies for adaptation; 9. Economic diversification.

## The Capacity-building Portal

The Capacity-building Portal offers a quick overview of the types of capacity-building support provided at the global, regional and country levels. Interactive maps and pie-charts allow users to customize search criteria and visualization of data.

---

**Box 29. How to access the capacity-building Portal**

The Portal can be accessed at <[unfccc.int/capacitybuilding/core/activities.html](http://unfccc.int/capacitybuilding/core/activities.html)>

---

## UNFCCC Compendium on methods and tools for vulnerability and adaptation assessments

The Compendium is a reference document that provides users with key information about available frameworks and tools, special features of each framework or tool, and information about how to obtain documentation, training, or publications supporting each tool, related to vulnerability and adaptation assessments.

---

**Box 30. How to access the UNFCCC Compendium on methods and tools for vulnerability and adaptation assessments**

The Compendium can be accessed at <[bit.ly/1JAaid3](https://bit.ly/1JAaid3)>

---

## Other knowledge hubs and platforms

### The Global Programme of Research on Climate Change Vulnerability, Impacts and Adaptation

The Global Programme of Research on Climate Change Vulnerability, Impacts and Adaptation (PROVIA) is a growing network of scientists, practitioners and decision makers working towards identifying research gaps and meeting policy needs in climate change vulnerability, impact and adaptation research. It focuses on research on vulnerability, impacts and adaptation to provide robust scientific information to decision makers. It has developed comprehensive guidance for assessing vulnerability, impacts and adaptation, which could also be applied as part of the NAP process.

---

**Box 31. For more information about PROVIA**

Contact PROVIA secretariat at:  
PROVIA SECRETARIAT  
P.O. Box 30552, Nairobi 00100, Kenya  
Telephone: +254 20 762 3231  
E-mail: [provia@provia-climatechange.org](mailto:provia@provia-climatechange.org)  
Website: <[www.unep.org/provia](http://www.unep.org/provia)>

---

## The Global Adaptation Network

**UNEP's Global Adaptation Network (GAN)** is composed of three regional networks: the Regional Gateway for Technology Transfer and Climate Change Action (REGATTA) in Latin America and the Caribbean; the Asia Pacific Adaptation Network (APAN); and the West Asia Regional Network on Climate Change (WARN-CC). A fourth network, the Africa Adaptation Knowledge Network, is in the process of being established.

The GAN focuses on improving the availability and accessibility of knowledge through online portals, events and products. It also provides capacity-building through training events, advisory services and institutional support. Finally, it links and supports regional and thematic adaptation networks, and catalyzes the establishment of additional networks.

---

### Box 32. Selected references

**PROVIA.** 2012. The PROVIA guidance on assessing vulnerability, impacts and adaptation. Available at <[bit.ly/1jEZgYA](http://bit.ly/1jEZgYA)>.

**UNEP.** Brochure on the Global Adaptation Network. Available at <[www.ganadapt.org/files/GAN\\_brochure\\_May\\_2012\\_final.pdf](http://www.ganadapt.org/files/GAN_brochure_May_2012_final.pdf)>.

---

### 3. CONCLUDING REMARKS

By enabling countries to address their medium- and long-term adaptation needs in a coherent and programmatic manner, the process to formulate and implement NAPs offers a unique opportunity to scale up adaptation action. In conducting the process, countries are likely to identify gaps and needs that they would need to address, in particular through mobilizing external support. By presenting the landscape of existing support for the NAP process, it is hoped that this publication contributes to such efforts.

# ANNEXES

## Annex 1: Main steps under each of the elements of the process to formulate and implement national adaptation plans

### **ELEMENT A. LAYING THE GROUNDWORK AND ADDRESSING GAPS**

1. Initiating and launching of the NAP process
2. Stock-taking: identifying available information on climate change impacts, vulnerability and adaptation and assessing gaps and needs of the enabling environment for the NAP process
3. Addressing capacity gaps and weakness in undertaking the NAP process
4. Comprehensively and iteratively assessing development needs and climate vulnerabilities

### **ELEMENT B. PREPARATORY ELEMENTS**

1. Analyzing current climate and future climate change scenarios
2. Assessing climate vulnerabilities at the sector and other levels, and identifying adaptation options
3. Reviewing adaptation options
4. Compiling and communicating a National Adaption Plan
5. Integrating climate change adaptation into national and subnational development and sectoral planning

### **ELEMENT C. IMPLEMENTATION STRATEGIES**

1. Prioritizing climate change adaptation
2. Developing a (long-term) national adaptation implementation strategy
3. Enhancing capacity for planning and implementation of adaptation
4. Promoting coordination and synergy at the regional level and with other multilateral environmental agreements

### **ELEMENT D. REPORTING, MONITORING AND REVIEW**

1. Monitoring the NAP process
2. Reviewing the NAP process to assess progress, effectiveness and gaps
3. Iteratively updating the NAP
4. Outreach on the NAP process and reporting on progress and effectiveness

The elements A to D for the formulation of NAPs are given in decision 5/CP.17, annex. The steps are numbered for ease of reference, however it is understood that countries will choose which steps are applicable for their country-specific situations, and in what order they would be undertaken.

Annex 2: Overview of adaptation funds under the Convention and its Kyoto Protocol\*

	LDCF	SCCF	Adaptation Fund	GCF
In operation	Since 2002	Since 2004	Since 2009	Since 2013
Cumulative pledges (USD)	USD 935.690 million (as of April 2015)	USD 349.083 million (as of August 2015)	USD 481.14 million, including USD 194.25 million from CER proceeds (as of June 2015)	USD 10.2 billion equivalent
Funding approved for projects (USD)	USD 931.514 million (as of October 2015)  (corresponding to 217 project proposals, including: - 161 to support of NAPA implementation, - 2 global projects to support NAP preparation in LDCs - 1 global project to build capacity for LDCs to participate effectively in intergovernmental process - As at 8 October 2015, 12 projects that had received technical clearance by the GEF Secretariat had been explicitly designed to advance LDCs' NAP processes)	USD 329.226 million  (for 73 projects proposals)	USD 318.62 million (as of June 2015)	N/A**
Number of projects endorsed	178 (as of October 2015)	60 (as of October 2015)	48 (as of June 2015)	N/A**
Number of benefitting countries (excluding global projects)	51 for NAPA preparation and 49 for NAPA implementation (as of October 2015)	79 (as of October 2015)	50 (as of June 2015)	N/A**

\* Information for the LDCF and SCCF was obtained from document GEF/LDCF.SCCF.19/03 Progress Report on the LDCF and the SCCF available at <<https://www.thegef.org/gef/node/11423>>. Information for the AF on funds approved, projects and beneficiaries was obtained from the AF's Trustee report (AFB/EFC.17/7) available at <<http://www.adaptation-fund.org/meeting/26th-afb-meeting/>>.

\*\* Not known at the time of printing. The GCF approved the first batch of funding proposals at its 12th board meeting in November 2015.

GCF= Green Climate Fund, LDCF= Least Developed Countries Fund, LDC= least developed countries, NAPA = national adaptation programme of action, NAP = national adaptation plan, SCCF= Special Climate Change Fund.

### Annex 3: Examples of technical support provided by developed countries to developing countries for activities relevant to the process to formulate and implement national adaptation plans\*

Element of the national adaptation plan process	Technical support	Target countries/ regions	
Laying the groundwork and addressing gaps	Stocktaking for National Adaptation Planning tool (Germany)	Cambodia, Mauritania, Togo, Tunisia and other countries	
	Regional capacity development programme for adaptation in African-Caribbean-Pacific countries (European Union)	Global Climate Change Alliance (GCCA) partner countries	
	Setting up a geographic information system database (European Union)	Comoros	
Preparatory elements	Supporting Pacific meteorological services to facilitate the use of climate science in adaptation planning (Australia)	Pacific region	
	Climate data collection and development of scenarios (Netherlands)	Africa	
	Training on vulnerability assessment and adaptation planning (United States)	Global	
	Design of climate change strategies and policies and local adaptation plans (European Union)	GCCA partner countries	
	Integrating adaptation into national policies and programmes (European Union)	Bhutan, Bolivia (Plurinational State of), Cambodia, Cameroon, India, Mali, Morocco, Mozambique and Sao Tome and Principe	
	Integrating climate risks, adaptation and policy frameworks into national development plans and budgets (Netherlands)	Peru	
	Integrating adaptation into development policies (Japan)	Indonesia and Viet Nam	
Implementation strategies	Introducing early warning systems (Spain)	Latin America	
	Introducing observing equipment in river basins and technical support for activities related to evacuation, in order to reduce damage caused by floods (Japan)	Morocco	
	Supporting forest restoration strategies and activities for increasing carbon stocks as well as combating loss of species (Austria)	Bhutan	
	Providing simplified national adaptation frameworks and activities to build the resilience of local communities (Cyprus and United Kingdom)	Nepal	
	Improving food security through adapted water- and energy-saving irrigation technologies (Liechtenstein)	United Republic of Tanzania	
	Promoting the use of local knowledge and sharing of expertise on adaptation in mountainous regions (Switzerland)	Peru	
	Reporting, monitoring and review	Supporting the enhancement of monitoring and evaluation systems (Japan)	Indonesia and Viet Nam
		Setting up monitoring systems (European Union)	Chad and Seychelles

\*Extracted from UNFCCC/SBI/2014/INF.25 and based on information coming from submissions from Parties, the NAP expo held in June 2013 and the one held in August 2014, a meeting of the Adaptation Committee NAP Task Force which was held in September 2014, and a total of 43 sixth National Communications of Parties included in Annex I to the Convention.



### Annex 4: List of bilateral donor agencies (non-exhaustive)

Party	Name of agency	Contact
Australia	Australian Agency for International Development	Tel. +61 2 6261 1111
Austria	Austrian Development Cooperation	Tel. +43 1 90 399 0, Email: office@ada.gv.at
Belgium	Belgian Development Cooperation	Tel. +32 2 505 37 00, Email: info@btcctb.org
Canada	Canadian International Development Agency	Tel. + 1 613 236 6163, Email: info@idrc.ca
Denmark	Danish Development Agency	Tel. +45 33 92 00 00, Email: um@um.dk
European Union	European Commission's Directorate-General for International Cooperation and Development	Tel. +32 2 299 11 11
Finland	Department for International Development Cooperation	Tel. +358 295 350 000, Email: KEO-01@formin.fi
France	Agence française de Développement	Tel. + 33 3 44 62 88 85, Email: site@afd.fr
Germany	Federal Ministry for Economic Cooperation and Development	Tel. +49 30 185 350, Email: info@engagement-global.de
	Deutsche Gesellschaft für Internationale Zusammenarbeit (GIZ)	Tel. +49 228 44 600, Email: climate@giz.de
	KfW	Tel. +49 697 431 0, Email: info@kfw.de
	Federal Ministry of Environment	Tel. +49 3018 305 2010
Greece	Ministry of Foreign Affairs	Email: secgenoffice@mfa.gr
Ireland	Irish Aid	Tel. +35 3 1408 2832
Italy	Ministry of Foreign Affairs	Tel. + 39 063 691 4215
Japan	Ministry of Foreign Affairs	Tel. +81 3 3580 3311
	Japan Bank for International Cooperation	
	Japan International Cooperation Agency	Tel. +011 866 8333, Email: jicasic@jica.go.jp
Korea (Republic of)	Korea International Cooperation Agency	Tel: +82-31-7400-114
Luxembourg	Lux-Development	Tel. + 35 22 958 581, Email: askld@luxdev.lu
Netherlands	Netherlands Development Cooperation (SNV)	Tel. +31 703 440 244, Email: info@snvworld.org
New Zealand	New Zealand Aid Programme	Tel. +64 213 75 105, Email: idgcontracting@mfat.govt.nz
Norway	Ministry of Foreign Affairs	Tel. +47 22 24 39 17
Portugal	Ministry of Foreign Affairs	Tel. + 35 1 213 946 000, Email: gabinete.ministro@mne.gov.pt
Spain	Ministry of Foreign Affairs	Tel. + 34 91 379 97 00
Sweden	Swedish International Development Cooperation Agency	Tel. + 46 8 698 50 00, Email: sida@sida.se
Switzerland	Swiss Agency for Development and Cooperation	Tel. +41 58 462 34 75, Email: deza@eda.admin.ch
United Kingdom	Department for Development and Cooperation	Tel. + 44 207 023 0000, Email: enquiry@dfid.gov.uk
USA	United States Agency for International Development	Tel. +1 202 712 0000

## Annex 5: Supplementary materials to the technical guidelines for the process to formulate and implement national adaptation plans

Organization	Supplementary materials
Conservation International	Tool for the integration of ecosystems into climate change adaptation planning processes
Convention on Biological Diversity	Promoting Synergies in Addressing Biodiversity and Climate Change Adaptation Issues: Linking NAPs and National Biodiversity Strategies and Action Plans <sup>a</sup>
Deutsche Gesellschaft für Internationale Zusammenarbeit (GIZ)	Aligning National Adaptation Plan (NAP) Processes to Development and Budget Planning <sup>b</sup> Stocktaking for National Adaptation Planning (SNAP) tool <sup>c</sup>
GIZ, United Nations Institute for Training and Research (UNITAR) and the United Nations Development Programme	Modules for NAP Training at the Country Level
GIZ, International Institute for Sustainable Development	Guidebook on Developing National and Subnational Monitoring and Evaluation Systems for Adaptation to Climate Change
Food and Agriculture Organization of the United Nations	Supplementary Guidelines to Support the Integration of Agriculture into NAPs; and Guidelines to Support the Integration of Genetic Diversity into Climate Change Adaptation Planning and NAPs
Global Programme of Research on Climate Change Vulnerability, Impacts and Adaptation	Supporting NAP development with the PROVIA Guidance: A user companion <sup>d</sup>
Global Water Partnership	Water Supplement to the Technical Guidelines: Supporting the national adaptation plan process <sup>e</sup>
International Federation of Red Cross and Red Crescent Societies	How to engage with National Adaptation Plans: Guidance for National Red Cross and Red Crescent Societies <sup>f</sup>
National Adaptation Plan Global Support Programmes (NAP-GSPs)	National adaptation plan process country-level training - Capacity development for multi-sectoral involvement in the NAP process <sup>g</sup>
Southern Voices on Climate Change	Joint Principles for Adaptation; National Adaptation Policy Assessment Tool, and Civil-Society Guide to the LEG/NAP Technical Guidelines <sup>h</sup>
United Nations Office for Disaster Risk Reduction and the United Nations Development Programme	Supplement on integrating disaster risk reduction into national adaptation plan process
UNITAR and NAP-GSPs	Skills assessment for National Adaptation Planning <sup>i</sup>
World Health Organization	Mainstreaming gender in health adaptation to climate change programmes: User's Guide <sup>j</sup>
World Meteorological Organization	Climate Services for Supporting Climate Change Adaptation: Supplement to the Technical Guidelines for the National Adaptation Plan Process

<sup>a</sup> <bit.ly/1Pj2t2z>

<sup>b</sup> <bit.ly/20qcNuS>

<sup>c</sup> <bit.ly/1LNNije>

<sup>d</sup> <bit.ly/MTSy6S>

<sup>e</sup> <bit.ly/1HvDleG>

<sup>f</sup> <bit.ly/1MoNgZ3>

<sup>g</sup> <bit.ly/1MtwFmB>

<sup>h</sup> <bit.ly/1WthggT>

<sup>i</sup> <bit.ly/1PwQ7nG>

<sup>j</sup> <bit.ly/1KVGc1v>

## Annex 6: Members of the Adaptation Committee as of October 2015

Name	Country
Ms. Christina Chan	United States of America
Mr. Tomasz Chruszczow	Poland
Mr. Luke Daunivalu	Fiji
Mr. Damdin Davgadorj	Mongolia
Mr. Andro Drecun	Montenegro
Mr. Juan Pablo Hoffmaister (Co-Chair)	Bolivia
Mr. Fredrick Kossam	Malawi
Mr. Don Lemmen (Co-Chair)	Canada
Mr. Clifford Mahlung	Jamaica
Mr. Naser Moghaddasi	Iran
Ms. Margaret Mukahanana-Sangarwe	Zimbabwe
Ms. Renske Peters	The Netherlands
Mr. Klaus Radunsky	Austria
Mr. Ali Shareef	Maldives
Ms. Sumaya Ahmed Zakieldean	Sudan
<i>Vacant</i>	

## LIST OF ABBREVIATIONS

<b>AC</b>	Adaptation Committee
<b>AF</b>	Adaptation Fund
<b>APN</b>	Asia-Pacific Network for Global Change Research
<b>CB</b>	Capacity-building
<b>CCCCC</b>	Caribbean Community Climate Change Centre
<b>CGE</b>	Consultative Group of Experts on National Communications from Parties not included in Annex I
<b>COP</b>	Conference of the Parties
<b>CTCN</b>	Climate Technology Centre and Network
<b>FAO</b>	Food and Agriculture Organization of the United Nations
<b>GAN</b>	Global Adaptation Network
<b>GCCA+</b>	Global Climate Change Alliance+
<b>GCF</b>	Green Climate Fund
<b>GCOS</b>	Global Climate Observing System
<b>GEF</b>	Global Environment Facility
<b>GEO</b>	Group on Earth Observations
<b>GEOSS</b>	Global Earth Observation System of Systems
<b>GFCS</b>	Global Framework for Climate Services
<b>GIZ</b>	Deutsche Gesellschaft für Internationale Zusammenarbeit GmbH
<b>GWP</b>	Global Water Partnership
<b>IAI</b>	Inter-American Institute for Global Change Research
<b>IOM</b>	International Organization for Migration
<b>IPCC</b>	Intergovernmental Panel on Climate Change
<b>LDC</b>	Least Developed Country
<b>LDCF</b>	Least Developed Countries Fund
<b>LEG</b>	Least Developed Countries Expert Group
<b>MDB</b>	Multilateral Development Bank
<b>M&amp;E</b>	Monitoring and evaluation
<b>NAP</b>	National adaptation plan
<b>NAPA</b>	National adaptation programme of action
<b>NAP-GSP</b>	National Adaptation Plan Global Support Programme
<b>NDE</b>	National designated entity for the development and transfer of technologies
<b>NIE</b>	National Implementing Entity
<b>NWP</b>	Nairobi work programme on impacts, vulnerability and adaptation to climate change
<b>OECD</b>	Organisation for Economic Co-operation and Development
<b>PPCR</b>	Pilot Program for Climate Resilience
<b>PROVIA</b>	Global Programme of Research on Climate Change Vulnerability, Impacts and Adaptation
<b>SCCF</b>	Special Climate Change Fund
<b>TEC</b>	Technology Executive Committee
<b>TGICA</b>	Task Group on Data and Scenario Support for Impacts and Climate Analysis
<b>TNA</b>	Technology Needs Assessment
<b>UNDP</b>	United Nations Development Programme
<b>UNEP</b>	United Nations Environment Programme
<b>UNFCCC</b>	United Nations Framework Convention on Climate Change
<b>UNIDO</b>	United Nations Industrial Development Organization
<b>UNISDR</b>	United Nations Office for Disaster Risk Reduction
<b>UN-SPIDER</b>	United Nations Platform for Space-based Information for Disaster Management and Emergency Response
<b>V&amp;A</b>	Vulnerability and adaptation
<b>WCP</b>	World Climate Programme
<b>WCRP</b>	World Climate Research Programme
<b>WHO</b>	World Health Organization
<b>WMO</b>	World Meteorological Organization

## ENDNOTES

- 1 Decision 5/CP.17, paragraph 1.
- 2 Least Developed Countries Expert Group. Technical guidelines for the national adaptation plan process. 2012. pp. 118-124.
- 3 Available at <[www.gcfund.org/operations/resource-guide.html](http://www.gcfund.org/operations/resource-guide.html)>.
- 4 Green Climate Fund. Readiness Programme Overview. Available at <[bit.ly/1NRvZfq](http://bit.ly/1NRvZfq)>.
- 5 Decision 5/CP.17. annex, available at <[bit.ly/1MuSpUw](http://bit.ly/1MuSpUw)>.
- 6 These are Chad, Lao People's Democratic Republic, Mali, Malawi, Niger, Rwanda, Senegal, Timor Leste and Yemen.
- 7 China's announcement in July 2015 as part of its climate action plan.
- 8 Source: 2014 Joint report on Multilateral Development Bank's climate finance. Pages 15-18, 43. Available at <[bit.ly/1ihpsOw](http://bit.ly/1ihpsOw)>.
- 9 Available at <[bit.ly/1iw4ht3](http://bit.ly/1iw4ht3)>.
- 10 Least Developed Countries Expert Group. Technical guidelines for the NAP process. 2012. UNFCCC. p 40-41.
- 11 Other collaborators and partners include: the Deutsche Gesellschaft für Internationale Zusammenarbeit (GIZ); the Food and Agriculture Organization of the United Nations (FAO), the Global Environment Facility (GEF), Global Water Partnership (GWP), the International Fund for Agriculture and Development (IFAD), Global Programme of Research on Vulnerability, Impacts and Adaptation (PROVIA), the United Nations Office for Disaster Risk Reduction (UNISDR), the United Nations Human Settlements Programme (UNHABITAT), the United Nations Institute for Training and Research (UNITAR), the UNFCCC, World Meteorological Organization (WMO) and the World Health Organization (WHO).
- 12 Representatives from Brazil, Jamaica, Malawi, Peru, Philippines, South Africa, and Togo.
- 13 Representatives from Germany, United Kingdom, and the United States.
- 14 Adaptation Committee information paper on strengthening the understanding of the roles of regional institutions and UN agencies in supporting enhanced adaptation in developing countries. Available at <[bit.ly/1Unxlyl](http://bit.ly/1Unxlyl)>.
- 15 The group self-organized itself at the NAP Expo 2015, which took place in Bonn, Germany in April 2015. More information on the NAP Technical working group is available in document FCCC/SBI/2015/7.
- 16 <[www.wcrp-climate.org/index.php/wgcm-cmip/about-cmip](http://www.wcrp-climate.org/index.php/wgcm-cmip/about-cmip)>.
- 17 <[www.cordex.org](http://www.cordex.org)>.
- 18 <[www.gosic.org](http://www.gosic.org)>.
- 19 More information available at <[unfccc.int/6793](http://unfccc.int/6793)>.
- 20 More information on the Nairobi work programme is available at <[unfccc.int/nwp](http://unfccc.int/nwp)>.
- 21 More information on the private sector initiative is available at <[unfccc.int/4623](http://unfccc.int/4623)>.







Adaptation Exchange on Facebook:  
[facebook.com/The.Adaptation.Exchange](https://facebook.com/The.Adaptation.Exchange)



**United Nations**  
Framework Convention on  
Climate Change